

STOPOVER HANDBOOK FOR THE KINGDOM OF TONGA

EDITION
2025
2026



Yellow Flap
Guides



Ancient Tonga

Fangaloto, Nuku'alofa
on the island of Tongatapu
Kingdom of Tonga

Ph: 25510

Email: info@ancienttonga.com

SAIL INTO ADVENTURE

Lean in as we take you on a tour about our culture and customs!

What more could you ask for as an introduction while you sail through the Pacific?

Take the time to breath in some culture, enjoy the friendly warm hospitality of our guide as you choose between a 1hr tour or a 2.5hr all inclusive tour.

Our Venue is also available for private group bookings for buffet and traditional shows. What to do more on your next adventure?

Call us for more details or send us an email

+676 25510

info@ancienttonga.com - www.ancienttonga.com

- ✦ Kava making and tasting
- ✦ Traditional medicine
- ✦ Tapa beating and design
- ✦ Mat weaving and tradition
- ✦ Customary dress and mats
- ✦ Family hierarchy and customs
- ✦ Boutique museum
- ✦ Traditional food tasting

The Unique
Feels of
Tonga:

What Each
Island Group
Offers



Kava'u

Explore pristine waters and a maze of inlets at this world-class sailing ground.

Ha'apai

Relax on untouched beaches and experience laid-back island life.



Tongatapu

Dive into history with ancient Polynesian sites and the famous blowholes.



Free Guides

Discover everything you need to know about cruising Tonga with TongaPocketGuide.com.



'Eua

This majestic island boasts Tonga's most dramatic landscapes and rock formations.

Tonga | POCKET GUIDE

The Stopover Handbook for Tonga welcomes you to the Kingdom of Tonga and its 176 islands, a destination in the heart of the Pacific Ocean with a rich cultural heritage and stunning natural beauty, where inhabitants still embrace *Fakatonga* (The Tongan Way) and hold deep respect for their royal family. While sailing the 4 groups of islands, cruisers will immerse themselves in the True South Pacific, where culture and tradition thrive, and the warm hospitality of the Tongan people will make you feel at home. During the Austral winter, this sailing paradise is graced by the magnificent ballet and songs of the whales. *Malo e Lelei* (welcome) to the Kingdom of Tonga.

MY ARRIVAL

PAGE
2

Map of Tonga 2
General Map of Tonga with the 4 Island Groups

Ports of entry and security at sea 3

Clearance procedures 4
Arrival procedures: Immigration, Customs, Biosecurity, Health

Practical information 6
Emergencies and useful contacts, general information.

MY DEPARTURE

PAGE
24

Dry Boat storage & Exit Formalities 24

General Map of the South Pacific 24

MY STAY

PAGE
8

Tongatapu group 8
Map, Anchorages, Services Offered, & Activities

Ha'apai group 14
Map, Anchorages, Services Offered, & Activities

Vava'u group 20
Map, Anchorages, Services Offered, & Activities

Niuaotupapu group 23
Map, Anchorages, Services Offered, & Activities

FOCUS ON

PAGE
12

Tongan culture & customs 12

Maritime history 13

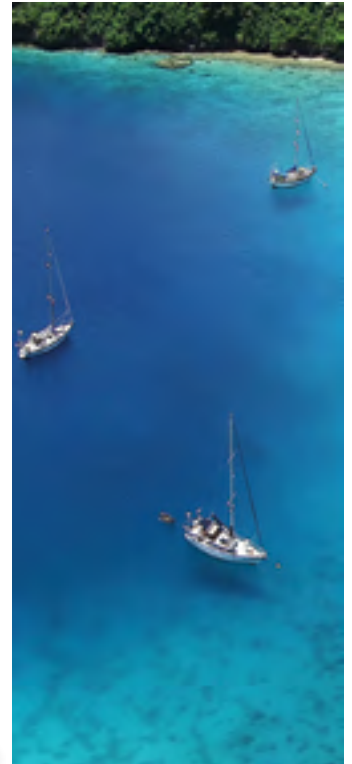
Flag & Monarchy 16

Special Management Areas (SMAs) 17

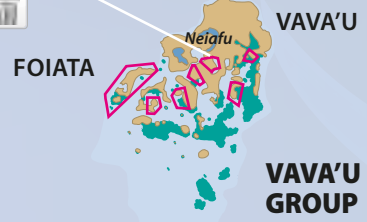
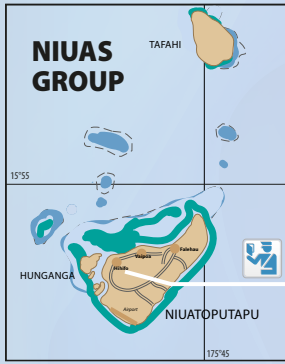
Whale Watching 18

Vava'u Sailing Festival 19

+ Events Calendar + Tongan Phrases



Created by ©Archipelagoes SARL
 Editors: S. Betz/S. Renard.
 Printed by STP Multipress, Tahiti, Jan. 2025
 Advertising & contacts: edition@archipelagoes.net
 Editorial board: S. Betz/E.Kokot Bill
 Design: Archipelagoes SARL, Infographies
 Translation: N. Bourgoin, Alene D. Rice.
 Cover page photo credit & pictures :
 © Tonga Tourism Authority
 Special thanks: Tonga Tourism Authority, Market Development Facility, Port Authority, Customs, Immigration and Biosecurity departments, Tonga Voyaging Society, Fisheries Division -Ministry of Agriculture & Food, Forests and Fisheries, Secretariat of the Pacific Community, Kite Surf Tonga, Tonga Boat Yard, Whale Discoveries



Home Reef

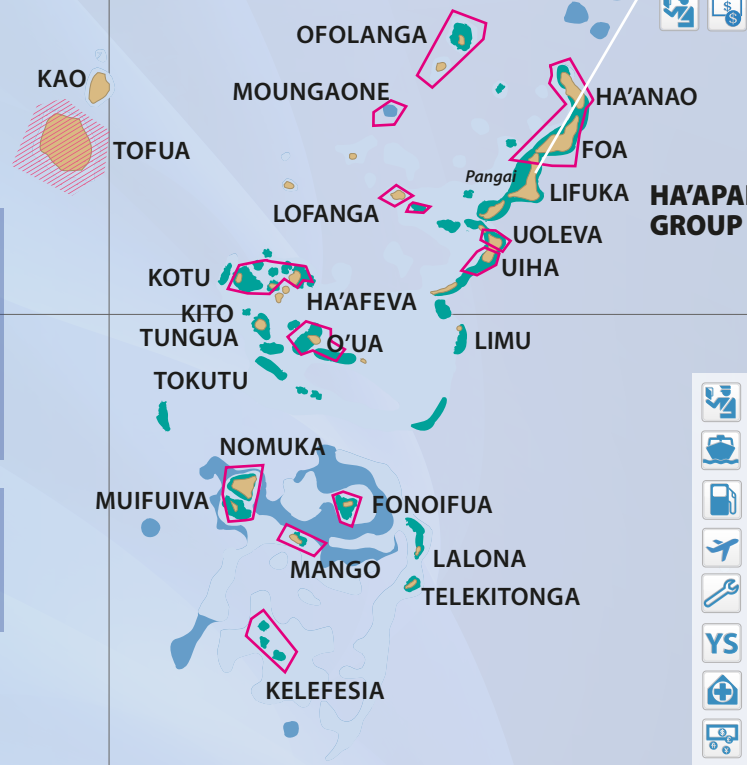
GENERAL MAP OF TONGA

THE 4 ISLAND GROUPS

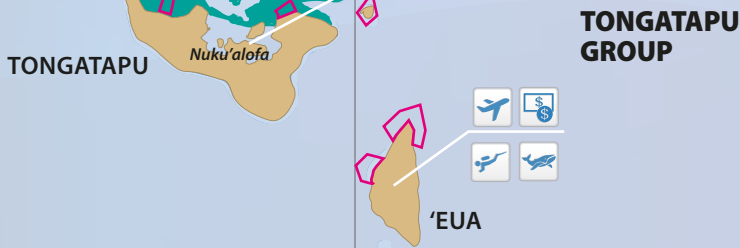
Tofua, volcanic island:
 Approx. 19.75°S, 175.07°W.
 Prohibited area (active volcano):
 Keep 2.5 NM away

Home reef: Approx. 19.0°S, 174.8°W
 Prohibited area (island emerging): Keep 5 NM away

Inter-islands distances:
 Tongatapu - Ha'apai: 42 NM
 Ha'apai - Vavau: 56 NM
 Vavau - Niuatoputapu: 164 NM



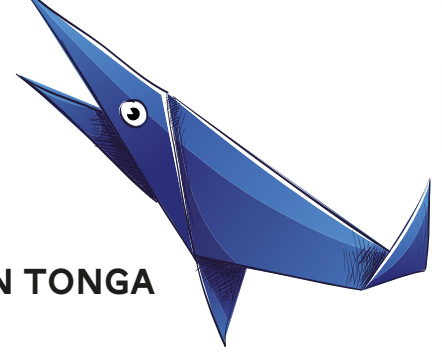
- Port of Entry
- Wharf
- Fuel station
- Airport
- Boat Yard: Vava'u
- YS Yacht Service
- Hospital
- Bank or ATM
- Shop
- Garbage
- Dive operator
- Whale watching operator
- Protected Marine Areas (SMA)
- Marine Advisement: Keep clear due to danger of volcanic eruption



19°

20°

21°



WHERE?
WHEN?
HOW?
PORTS OF ENTRY

ARRIVING IN TONGA

There are 4 entry and departure ports in Tonga for cruisers: Nuku'alofa (Tongatapu), Pangai (Ha'apai), Neiafu (Vava'u) and Niua (Niuatoputapu):

Vessels must fly the yellow flag (Q flag) until formalities are completed (Customs, Immigration, Biosecurity, Health Authority). Captain should contact the Harbormaster (VHF 16 - email-or phone) or Customs on arrival to be

given instructions on where to berth and give permission for officers from the departments of Health, Biosecurity, and Customs to board your yacht. When officers board your vessel, please show respect with a clean boat and proper attire. You may also be asked to visit the offices ashore for check-in. It is not appropriate to give gifts to government officials; only offer refreshments such as soft drinks, coffee, or tea.

Be prepared to present your outward clearance from your last port.

It is essential to send your pre-arrival declaration as early as possible

Yachts must arrive at one of the official ports of entry:

Tongatapu: Nuku'alofa. Upon arrival, call the port officer on VHF channel 16. He will provide instructions regarding whether to anchor or come to the dock and the procedure for checking in. **There is a dedicated yacht anchorage on Pangaimotu Island** (less than a mile from Nuku'alofa). You can anchor there and go to Big Mama's Yacht Club on Pangaimotu where transport is available to town, or you can take your own dinghy to town and tie up at Queen Salote domestic wharf. Please note that crew should not go ashore until the vessel is completely checked into the country.

Superyachts can dock alongside Vuna wharf at the cruise terminal with prior booking by a yacht agent.

Ha'apai: Pangai In the central Ha'apai island group. Anchor outside the harbour in 5 m depth (sandy bottom). Officials may either board your vessel or invite you to tie up at the wharf in the village.

You are not allowed to release your holding tanks in any ports in Tonga (need to go 5 NM out to sea)

Vava' : Neiafu When arriving during normal office hours, tie up at the main Customs wharf at the northern end of Neiafu Harbour. If arriving after hours or on a weekend, you must anchor in front of the Customs wharf (see Vava'u prohibited anchorages areas on p. 22). Fly your Q flag and do not go ashore before completing clearance.

Niua: Niuatoputapu Anchor in Niuatoputapu harbour and go ashore to meet with the harbormaster in Hihifo.

While in Tongan waters, it is polite to fly the Tongan courtesy flag.



Always pay port fees before leaving an island.



Neiafu Harbour

PORTS AUTHORITY TONGA CONTACTS

Vuna Road Nuku'alofa Tongatapu
Call Nuku'alofa Port control
VHF 16 - Working Channel CH 14
Ph. +676 23 168 / +676 24559
csd@tongaports.to or
marports@portsauthoritytonga.com
■ www.portsauthoritytonga.com
Opening hours: Mon-Fri 8:30 am - 4:30 pm

Neiafu, Halaevalu Wharf, Vava'u
Contact Marine & Port, Vava'u:
VHF Ch 16
Ph. +676 70 100 / +676 70 657
Port Captain - Vava'u +676 70 639
Halaevalu customs officer:
lesielipoliton@gmail.com

Pangai, Taufa'ahau Wharf, Ha'apai
Visit the Marine Department office located on the wharf.
Ph. +676 60100 / +676 60651
Monday to Friday 8.30 am - 12pm, 1.30pm - 3 pm
VHF: 16

Falehu, Niuatoputapu
Go ashore and meet with the harbormaster
8:30 am to 4:30 pm

SAFETY & SECURITY AT SEA

Tonga Police are responsible for Search and Rescue operations in Tongan waters. They are supported by the Rescue Coordination Centre New Zealand for Mass Operations and Distress Beacon activation, monitoring and response. In the island group of Vava'u, VVMRA is available for boating assistance (towing, medical advice...)

Tonga Police Offices
Tongatapu (Main office): 0800922 / 922
Ha'apai (Pangai): Ph. +676 60222
Vava'u (Neiafu): Ph. +676 70233
Niuatoputapu: 0800922 / 922

VVMRA Vava'u Volunteer Maritime Response Association Monitors
Covers up to 60 NM around Vava'u
VHF 26/60 (24h x 7days)
vvmratonga@gmail.com
Ph. +676 8623365 and +676 7515020
■ www.vvmra.org



WHERE?
WHEN?
HOW?



PROCEDURES AND FORMALITIES UPON ARRIVAL

WHERE TO START?

IMMIGRATION PROCEDURE

Visitors to Tonga are required to hold a passport with a validity of a minimum of 6 months.

Visa information: For a list of countries granted a **Visa On Arrival (VOA)**, go to:

■ www.tongaembassycn.gov.to/en/going-to-tonga-en/visas-en

- For citizens of the countries listed on the website above, a free **VOA** will be issued for 31 days upon entry into Tonga. This is extendable for another 5 months.
- **Passport holders of Schengen States** will be issued a **VOA for 90 days** and can extend for another 3 months only.
- Citizens of all other countries need to apply for a **visa in advance**.

Those intending to visit Tonga for more than 30 days are required to obtain an entry permit issued by the Immigration Department of the Ministry of Foreign Affairs prior to arriving in Tonga. **For further details** contact ptaulangovaka@yahoo.com

Extension of Stay

To extend your length of stay, contact the Immigration Department in Vava'u or Nuku'alofa at least one week before your VOA expires. Or email: ptaulangovaka@yahoo.com

One-way permit

If you have crew embarking or disembarking in Tonga, you need to request a one-way permit. Send a copy of the crew's passport and airline return ticket via email to tongapermit@gmail.com. The fee must be paid in cash to Immigration or to your yacht agent (Form C18).

■ www.revenue.gov.to/customs-forms

Short term employment visa:

If you are considering working in Tonga, or doing charter or airbnb on your boat during your stay, you need to apply before arriving in Tonga for a short term employment visa at ptaulangovaka@yahoo.com

Embassies, Consulates, Honorary consulates

for the following countries are located in Nuku'alofa: NZ, Australia, Japan, USA, China, UK, France, Italy, Sweden, Czech Republic, Spain, Germany, Netherlands, and Finland.

More information

■ www.gov.to/tongans-abroad

For all visa-related inquiries

Peti Taulangovaka:
ptaulangovaka@yahoo.com

IMMIGRATION CONTACTS

In the 4 ports of entry, the Customs officer will stamp your passport. You do not need to visit Immigration unless there is an issue with your visa.

Nuku'alofa – Tongatapu

Immigration Department on Salote Road
Ph. +676 7401 500

saun@customs.gov.to

Pangai – Ha'apai

Customs and Immigration are handled by the same officer. You can do your international clearance in Ha'apai, but not extend your visa.

Ph. +676 60651

kalolainateutau@customs.gov.to

Neiafu – Vava'u

Situated on the main wharf
Ph. +676 70629 or +676 71443
Mobile: +676 7401847

Niuaotuputu – Niasu

The government officer M.Kaufo'o 'Onesi:

kaufouonesi74@gmail.com

ADDITIONAL INFORMATION

Firearms must be declared on arrival and will be held at Customs & Ports until your departure.

Duty free fuel is only available when you are about to leave Tonga (Minimum order of 200 liters)

CUSTOMS PROCEDURE

Yachties travelling to Tonga should be aware of the following customs regulations and visit

■ www.revenue.gov.to/customs-forms

to download all the requested forms. The forms provide essential information to the authorities. Failure to submit the forms can result in fines and clearance delays.

Yachts will be granted a 4-month stay, and subject to your continued compliance, can easily be extended to 12 months. **Customs procedure & Forms**

Prior to arrival: At least 24 hours prior to anticipated ETA, yachts arriving in Tonga from overseas must submit the **Advance Notice of Arrival form** (Form ANOA - Small Craft) and send it to a.n.a@customs.gov.to.

Upon arrival, various forms must be completed with the officials (on board or ashore), including:

Certificate of Clearance (small vessels) form. Must be completed upon arrival in Tonga with the Department of Health, Agriculture, Immigration & Customs. This form is essential for ensuring that the vessel has met all legal and regulatory requirements for the country.

Inward Report form (Form ANOA). It provides essential information about your vessel, crew, and voyage details to the Tongan authorities.

Import Entry (Temporary) Yachts & small vessels:

Form C13. On arrival, the yacht will be granted a 4-month stay. This form helps Tongan authorities manage and monitor the temporary importation of vessels, ensuring compliance with local regulations and facilitating a smooth entry process for visiting yachts.

During your Stay: Local Movement Report Forms. If you intend to cruise between Tongan island groups, you must notify Customs officers in the island group which you are departing from, by completing a Customs local movement notification form. This information is collated for border security monitoring purposes for the duration of your stay in Tonga. Please also note, where you are required to pay port fees, we encourage you to settle the same before handing Customs your local movement notification form."

Upon departure: Outward Report form C15 (small vessels) must be filled out before leaving Tonga. This form ensures that all necessary information about the vessel, crew, and voyage is documented before leaving Tongan waters. Make sure to have all your port fees paid before your last visit to Customs.

Tax Identification Number

Obtain a TIN number from the Revenue Department if you plan to ship items into Tonga. You need this number in order to get duty free shipping.

WANT TO STAY LONGER?

If you want to extend your stay you **MUST** apply at least 2 weeks before the end of your 4-month stay. **TIP:** extensions can be made at your local Customs office; they will process them with the CEO's office in Nuku'alofa.

CUSTOMS CONTACTS & FORMS

■ www.revenue.gov.to/index.php/customs-tariffs-and-fees

Download Customs forms:

■ www.revenue.gov.to/customs-forms

Prohibited and Restricted Imports

■ www.revenue.gov.to/prohibited-and-restricted-imports

Customs offices in Nuku'alofa

Ph. +676 7400653 / +676 7400650

General enquiries email: info@customs.gov.to

■ www.revenue.gov.to

Customs offices in Ha'apai (Pangai)

Pangai Wharf, Pangai, Ha'apai, Tonga

Ph. +676 60 051

kalolainateutau@customs.gov.to

Customs offices in Vava'u (Neiafu)

Neiafu Wharf, Neiafu, Vava'u, Tonga

Ph. +676 70 053

setletutelavulavu@gmail.com / uikelotuk@gmail.com

Customs office in Niuaotuputu (Hihifo)

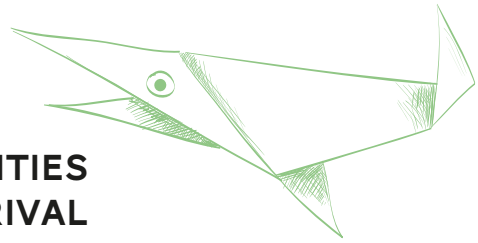
Officer 'Ana Maui Loketi; analoketi46@gmail.com

Ph: +676 7783014

Receiving boat spare parts in Tonga is exempt from tax but needs to go through a Customs broker to complete the process: commercialESAD@customs.gov.to

WHERE?
WHEN?
HOW?

PROCEDURES AND FORMALITIES UPON ARRIVAL



WHERE TO START?

HEALTH

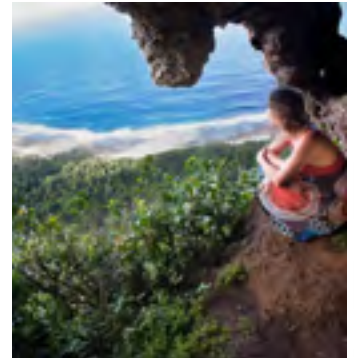
Health Declaration: Upon arrival, sailors must complete a health declaration form detailing any recent illnesses or symptoms experienced by the crew. The **Health Clearance form** is part of the clearance procedure (fee TOP\$100 per boat onshore or TOP\$200 offshore). It is essential that this fee is paid to avoid problems entering your next destination country.

Tongatapu Group
Ministry of Health - Tongatapu Office,
Nuku'alofa
Ph. +676 23200 / +676 27826
health@health.gov.to

Ha'apai Group
Health Department - Ha'apai Hospital,
Pangai
Ph. +676 778 1554
haapai.health@health.gov.to

Vava'u Group
Ministry of Health - Vava'u Office,
Neiafu
Ph. +676 758 4644 / +676 70704
vavau.health@health.gov.to

Niuas Group
Ministry of Health - Niuas Office
Niuatoputapu,
Ph. +676 50500 / 7585605 / 80100
niuas.health@health.gov.to



BIOSECURITY & QUARANTINE

When vessels enter and exit Tonga, they should adhere to the following protocols:

In your **Advance Notice of Arrival** there is a biosecurity section to declare any relevant items, such as fresh produce, plants, or animals on board. You are allowed to bring in fresh food & packaged/labelled meat, but those must be declared and stay on board.

Rubbish must be disposed of upon arrival. It will be collected by a quarantine agent. **Fee: TOP \$20 + \$2 per bag.**

Restricted Items:

■ www.revenue.gov.to/prohibited-and-restricted-imports

Any pets on board must be declared on your ANOA.

Before arriving in Tongan waters, clean the hull, decks, and equipment thoroughly to prevent the transfer of foreign organisms.

Upon arrival, be ready for a quarantine and vessel inspection for potential biosecurity risk.

Biosecurity measures are crucial for safeguarding aquatic environments and preventing the spread of diseases, pests, and invasive species.



Contacts for Quarantine & Biosecurity

Nuku'alofa office: Post Harvest Building, Hala Vuna, Touliki

Ha'apai office: Ph. +676 60400

Vava'u office: Quarantine building, next to Customs

Ph. +676 70635 / +676 8420147
tahi.vulangi22@gmail.com

No vets in Vava'u.
Ph. +676 24257

Niuatoputapu office: Ph. +676 80010

VEPA IN VAVA'U

Vava'u Environmental Protection Association (VEPA) has a mission to protect Tonga's biodiversity, environment, and natural resources by involving the community. They focus on people and encourage youth to join their programs. They organize beach clean-ups and school awareness programs. Contact them if you are willing to help out.

VEPA welcomes donations: books for schools, pens, pencils, and snorkeling gear for youth programs.

Location: Neiafu small boat wharf, just under Bellavista restaurant.
Ph. +676 863 9861 or +676 75 19417
info@vavauenvironment.org

HOW TO MANAGE YOUR WASTE?

WASTE management: Keep Tonga Green, Clean & Healthy

Disposal of waste, holding tanks & ballast water

Properly dispose of waste, including food scraps, trash, and sewage.

Ballast water and holding tanks

should be managed to prevent the introduction of non-native species. When you are in harbours or close to land, use your holding tanks. You must be 5 NM offshore to release holding tanks.

During your stay

- Visitors need to carry all rubbish on board and dispose of it in a refuse container in one of the main towns. Rubbish bins in town are for public use, normally collected on Tuesday.
- Please be considerate if your garbage smells.
- Do not dispose of used oil or batteries in refuse containers.
- Never dispose of garbage in the outer islands.
- Throwing rubbish into the waters of Tonga is forbidden.

Location of public rubbish bins for cruisers:

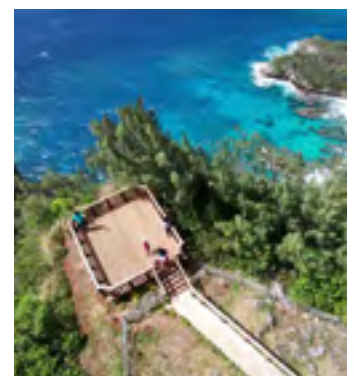
Nuku'alofa (Tongatapu): Fua wharf
Pangai (Ha'apai): at the wharf
Neiafu (Vava'u): Halaevalu wharf in front in front of VEPA office, or at Beluga dive club.
Used oil (Neiafu): Tropicana Café

For large collections: email Tevita Toli (Vava'u): tevita.toli@mafff.gov.to

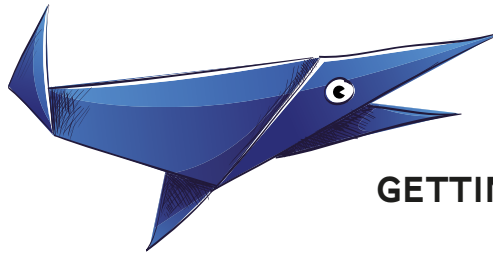
Waste Authority contact:

info@wasteauthoritylimited.com
Ph. +676 37 504 / 37-715
Facebook: Waste Authority Limited

Although new recycling services may be available now in Tongatapu and Vava'u, keep in mind that recycling facilities are rare in Tonga: try to keep recyclables with you. To assist the population, if your next stopover is Fiji or New Zealand, consider collecting used batteries from the local communities and carrying them there (Fiji / New Zealand) for proper treatment.



WHERE?
WHEN?
HOW?



GETTING YOUR BEARINGS IN TONGA

PRACTICAL INFORMATION



EMERGENCY ASSISTANCE

Police: 0800922 / 922
Fire – Dial 999 or +676 70 089
Emergencies Assistance: 933

HOSPITALS

Tongatapu +676 23 200
Ha'apai +676 60 790
Vava'u +676 70 200



Kingdom of Tonga: 176 coral and volcanic islands; 130 of the islands are uninhabited.
Language: Tongan & English

TIME ZONE UTC (+13)

The place where time begins: Tonga is situated east of 180° but the International Dateline makes a detour to include Tonga west of the line. It often happens that cruisers land in Tonga on Sunday, thinking it is Monday.

RADIO COMMUNICATIONS

As a responsible sailor, **monitor VHF 16** at anchor and underway so you can be of assistance to local boats as well as other sailors.

COMMUNICATION

Country code: +676.
There are no local area codes.
Directory for inquiries: 910.
Local Phone Networks: To get WiFi in Tonga consider getting a local SIM card from either UCall (TCC) or Digicel Tonga (in Nuku'alofa, Pangai and Neiafu). These networks offer data, calling, and texting. Make sure your phone is unlocked and compatible with GSM networks (900/1800 MHz) and bring your passport as ID when purchasing a SIM card.

Public WiFi is rare in Tonga except in Neiafu.

Using your **Starlink** equipment is allowed during your stopover in Tonga.

WATER

The quality of the water is variable so it is advisable to check if the tap water is safe to drink. When travelling in rural areas it is recommended that bottled water is used. Tanks can be filled at Neiafu (Vava'u) and Nuku'alofa (Tongatapu). Rainwater is available from Tropicana Café in Vava'u in 20 liter jugs or for purchase at the Boatyard.

ARTIFICIAL LIGHTS

Do not run **strobe lights** when at anchor. It disturbs the tranquility of the local population as well as neighboring yachts. Strobes lights should be used only for emergency signaling.

Underwater lights should not be used while in the Tonga as they disrupt the natural marine environment and the behavior of the fish which the local population rely upon.

AIDS TO NAVIGATION

Buoy A system (green on starboard and red to port). Use the services of a pilot if your boat is over 45 m.

YACHT SERVICE AGENCIES

Vaiana Yacht Services

Entry formalities, duty-free fuel, "master in charge" letter, all yacht services upon request.

Vai Makatuu:
Whatsapp: +676 844 2994
vaiufialatu46@gmail.com

Café Tropicana

Neiafu, Vavau
Ph. +676 71322 / +676 7512347
Mob. +676 8812347 - greg@vavau.to
■ www.vavau.to/tropicana

GAS & POWER

Cooking gas

Tongatapu has a few gas refilling stations. European gas bottles need an adaptor.

Vava'u at the Tropicana Café or ask your yacht agent.

Electricity: 240 V - 50 Hz

WEATHER FORECAST

Radio Nuku'alofa: Dial 1017 kHz on the AM band. Weather follows the BBC news at 07:00 am and the Australia news at 08:00 am.

Nuku'alofa VHF Channel 10: weather forecast at 10:30 am and 3:30 pm daily (except Sunday).

Vava'u: VHF 26

Tonga Meteorological Service:

■ met.gov.to

Note: Due to its geographic location, Vava'u has historically had lower instances of cyclonic activity than other areas in the region.

SAILING IN TONGA

Tropical oceanic climate

Winds: During the Austral winter May to Dec, the SE trade winds predominate (15-25 knots) with moderate humidity. During the Austral summer Dec to May, wet season with higher temperatures and humidity, Trade Winds predominantly from the east or NE (10-20 knots) bring warm and moist air from the Pacific Ocean. Severe weather usually preceded by westerly winds.

Tides: Average 1.40 m tide range between high and low tide. Tide Times and Tide Chart for Nuku'alofa (tide-forecast.com)

Swell: Almost no swell within the Vava'u group. Outside the group, swells are 1-3 m.

Current: Significant currents in the passes between the islands, with some tidal influence. The westerly set of the surface current is also a considerable factor. Navigate with caution.

Temperatures: Between 24°C (75F) and 30°C (84F) all year round.

Cyclones: Tonga is on the tropical cyclone belt, but the East part of Fuaa Harbour (Tongatapu) and Neiafu (Vava'u) provide cyclone havens and a few hurricane moorings have been installed. Keep in mind that cyclones can occur during the wet season, especially from December to April.

Anchoring: The lagoon is the backyard and the richness of the inhabitants, so it has to be protected. When anchoring, choose a sandy bottom whenever possible. If there is coral in the area, float the chain so the boat swings in shifting winds without getting the chain caught in coral.

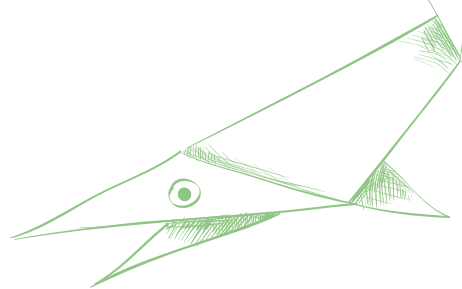
Superyacht Services Tonga

Operates in all the Tongan islands
David Hunt:
Ph. +676 878 1410 / +676 841 7739
dhunttonga@gmail.com
■ www.superyachtservicestonga.com

Yacht Help Tonga

(SY only) Nukualofa and Vavau.
Ph. & Whatsapp +676 776 2055
dgleonard@hotmail.com

WHERE?
WHEN?
HOW?



PRACTICAL INFORMATION

TRANSPORTATION

Airlines flying into Nuku'alofa, capital of Tonga: Air New Zealand, Fiji Airways, Qantas (AUS) and Talofa Airways (Samoa)

Inter-island transportation

Flights: Lulutai Airlines operates all domestic flights in Tonga, connecting the major island groups.
info@lulutaiairlines.com

■ www.lulutai-airlines.to

Taxis: Taxis are only available in Tongatapu, Vava'u and Ha'apai. They often offer tours around the island. Taxis do not operate on Sunday.

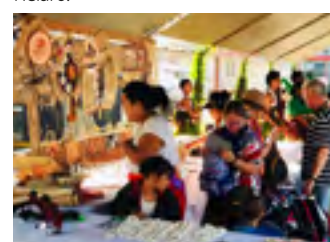
Ferries: Ferries in Tonga transport both cargo and passengers, offering basic comfort but providing an excellent opportunity for local immersion. Up-to-date schedules can be found at the Visitor Information Centres in Tonga, as well as on the Facebook pages of the ferry companies.

Local buses: Travelling by bus is only available in Tongatapu and Vava'u. Buses in Tongatapu operate Monday – Saturday from 7am to 5pm, with routes on the east and west sides

of the island and around Nuku'alofa. Buses in Vava'u are less reliable as a method of transport for getting around as it is used primarily as a school bus service. Buses only run Monday to Friday with no schedule.

Car rentals: Note that in Tonga cars drive on the left side of the road at 50 km/h in the city and a max of 70 km/h between villages. A range of vehicle types are available to rent on the islands of Tongatapu, Ha'apai, and Vava'u. Most car rentals only accept cash as payment. Visitors from visa-exempt

countries can drive with their National driving licence. However, visitors from non-visa exempt countries are required to obtain a visitor's Driving License at the Land Transport Division office in Nuku'alofa or the Police Station in Neiafu.



TONGA TOURISM WELCOMES CRUISERS

Tonga is willing to better welcome cruisers. To improve the cruising experience in Tonga, there are 2 officers specially dedicated to the nautical tourism market.

For general activities information, visit their Tourism office in Nuku'alofa, Neiafu, or Vavau.

For questions about nautical tourism in general, Atelaite and Felemi, at Minister of Tourism will be your liaison.

felemiika2012@gmail.com / moalaite.1@gmail.com
Facebook: Tonga Tourism
Instagram: @tourismtonga

PROVISIONING

The largest markets and supermarkets are in Neiafu (Vava'u) and Tongatapu. In each major village, you'll find groceries and a local market with fresh fruit, vegetables, & handicrafts. Fish is usually sold directly from fishing boats early in the morning. In smaller villages, there are numerous "fale keloas" (bush shops) with the basics. Be aware that most service providers and local markets only accept cash (no credit cards).

HEALTH

Health facilities in Tonga are basic. The range of drugs available is limited and modern equipment is in short supply. Medical evacuation from Tonga is required for most serious medical issues. Make sure you have adequate travel health insurance and accessible funds to cover the cost of any medical treatment abroad and/or repatriation.

Updated info and contacts for restaurants and activity providers:

- Tonga Tourism offices
- tongatourism.travel
- Tonga Pocketguide
- tongapocketguide.com/the-sailing-guide-to-tonga
- Jason Travel
- www.jasons.com/tonga



BUSINESS HOURS

9:00 am to 4:30 pm. Most government offices close for lunch on workdays. All businesses close on Sunday, except most restaurants, bars and resorts.

CURRENCY

The Tongan dollar (T\$) called Pa'anga
1 US Dollar = 2.35 Tonga Pa'anga. (2024)
1 EUR = 2.53 Tonga Pa'anga

DRONES

Drones must be registered at Tonga Civil Aviation (support@moi.gov.to) before you fly them. Do not invade people's privacy. Not to be flown on Sundays.

HANDICRAFTS

If you purchase any handicrafts, take them to a quarantine office (one in each island group) to get a certificate allowing them to be taken into other countries. Bring along your receipt, some plastic bags, and your passport.



TONGAN FLAG AND COAT OF ARMS

The national flag is used by the population at large. It is flown outdoors and by ships. The coat of arms is a symbol of the monarchy. It is used in print and as a wall decoration in official buildings.

History of the Tongan Flag

The Tongan flag was adopted in 1875 and is one of the oldest in the Pacific. The constitution states that it will never be changed. It reflects the deep-rooted Christianity in Tonga. The cross

reminds the people that they owe their salvation to the sacrifice made by Jesus on the Cross, the red represents the blood Jesus shed and the white stands for purity.

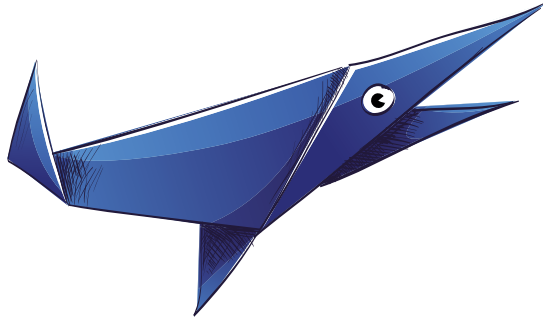
Symbolism of the Tongan Coat of Arms

The arms were designed in 1862 by Prince Uelingatoni Ngu Tupou and is identical to the Royal arms. The three stars in the first quarter represent the three main groups of islands in the kingdom. The kingdom

itself is symbolised by the crown. The dove symbolises peace, unity and Christianity and the three swords symbolise the three Royal dynasties of Tu'i Tonga, Tu'i Ha'atakalaua and Tu'i Kanokupolu to which the actual royal house traces its descent. On a six-pointed star in the middle is the cross symbolizing the nation. The motto: "Koe otua mo Tonga ko hoku tofia" can be translated as 'God and Tonga are my inheritance'. The garland around the crown is the symbol of the judicial authority of the

chief in the time before the kingdom. The garland also represents the royal dependence on God's grace.





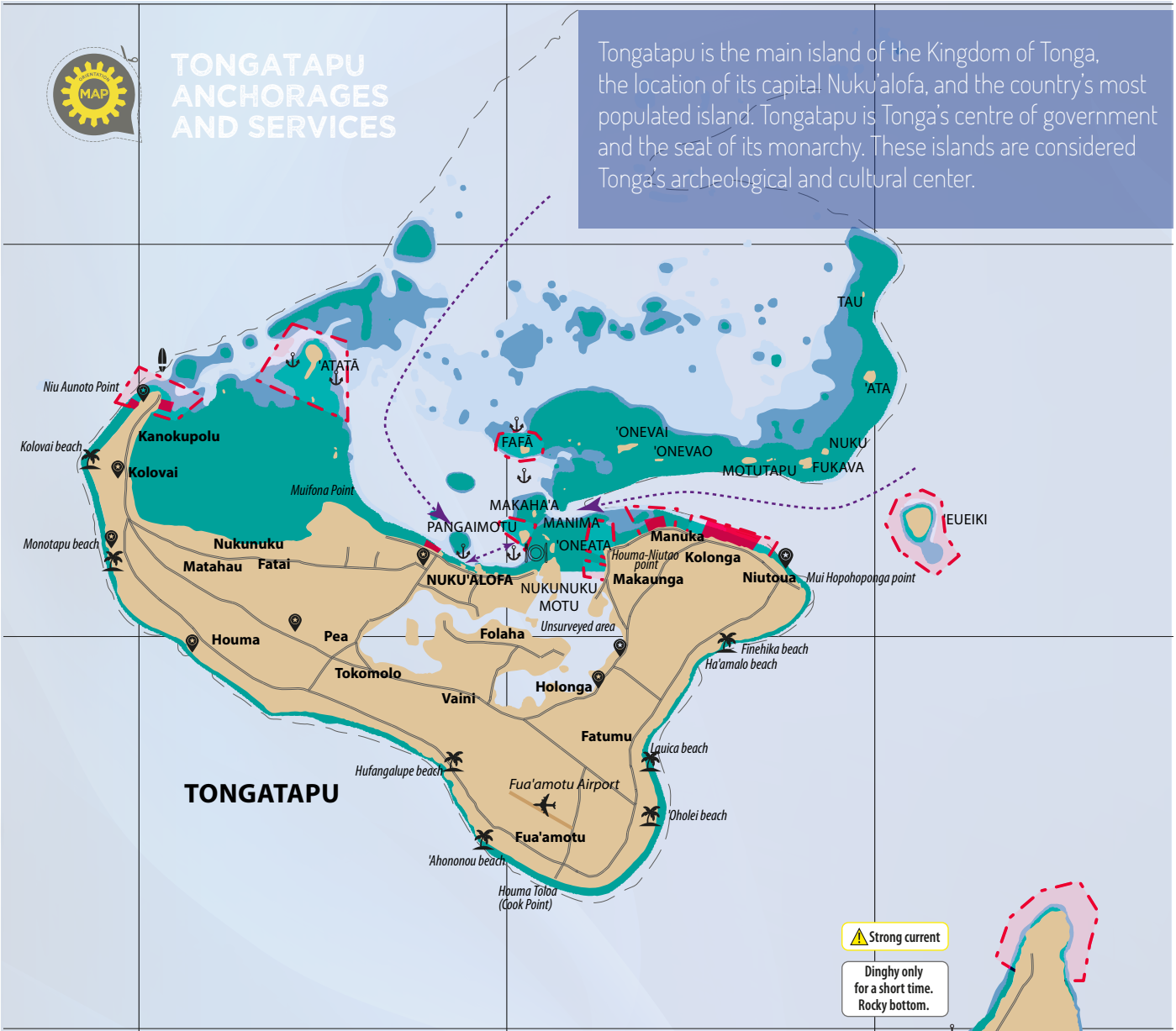
WHERE?
WHEN?
HOW?

TONGATAPU



TONGATAPU ANCHORAGES AND SERVICES

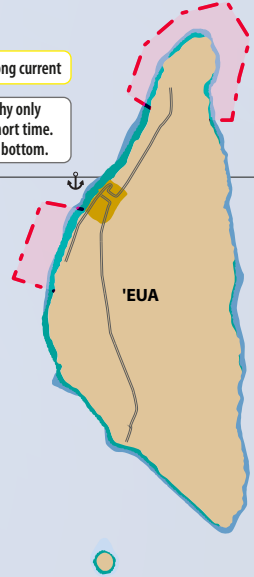
Tongatapu is the main island of the Kingdom of Tonga, the location of its capital Nuku'alofa, and the country's most populated island. Tongatapu is Tonga's centre of government and the seat of its monarchy. These islands are considered Tonga's archeological and cultural center.



TONGATAPU

Strong current

Dinghy only for a short time. Rocky bottom.



KEY TO SPECIFIC AREAS

SMA Community Information

Specific Areas

- SMA boundary
- Fish Habitat Reserve (no fishing, no anchoring)

CHART KEY

- | | |
|-----------------|------------------|
| Anchorage | Bank / ATM |
| Dinghy | Car rental |
| Surf spot | Shop / grocery |
| Remarkable site | Handicrafts |
| Royal palace | Fuel station |
| Hospital | Restaurant / Bar |

- | | |
|--|---|
| Land | Depth between 1 to 10 m |
| Coral, depth < 1 m | Depth > 10 m |

ISLAND GROUP OF TONGATAPU

THE SACRED SOUTH

APPROACH

We recommend an approach during the day rather than night!

The Ava Lahi channel: When approaching from the east, keep Tau & 'Ata well to port. When approaching from the west steer well north of Mama'o reef. Then follow the markers in this wide channel.

The Piha passage: Deep water passage used by inter-island ferries. Be aware that conditions become choppy when wind and current counter each other.

ARRIVAL

Upon arrival, anchor in front of Pangaimotu and call Nuku'alofa Port Control VHF 16 - Working Channel CH14 - Ph. +676 23 168 / +676 24559 info@portsauthoritytonga.com

DINGHY LANDING

In Nuku'alofa, go to the north quay, but the walk to the town is long. You can also go by dinghy to the other side of the harbour (at the corner at the end of the fishing quay). It's closer to the town center.

WASTE

Some small containers are available on the wharf. Remember that there is almost no recycling in Tonga.

SAILING TO THE OUTER ISLANDS

Be cautious, as they are surrounded by coral patches, reefs and shallow water. For better visibility, sail west in the mornings, and east in the afternoons.

CRUISER HIGHLIGHTS

Nuku'alofa is a great stop in Tonga for a number of reasons. Visit the **Talamahu Market** in Nuku'alofa with its huge craft market. Some of the finest Tapa cloth in the South Pacific is made in Tongatapu. Check with Tonga Tourism for the highlights of this island including:

- the spectacular **Mapu 'A Vaea** blowholes (the chief's whistles)
- Ha'amonga Trilithon "The Stonehenge of the Pacific"
- Captain Cook's landing site
- **'Anahulu Cave:** Dramatic display of stalactites & stalagmites, followed by a refreshing dip in a freshwater pool

ANCHORING SUGGESTIONS

Pangaimotu (SMA)

1.2 NM from Nuku'alofa. Good protection against wind and swell, good seabed and holding, a nice sandy beach. Ashore, Big Mama warmly welcomes cruisers and provides information about Tongatapu Island. There's a bar with a limited food menu, and other services for cruisers upon request such as laundry, airport transfers, fuel. Great snorkeling over the shoal to the north and along the west shore of Pangaimotu.

Big Mama Yacht Club

Ph. +676 771 5762 & +676 886 5233
pangaimotu2007@yahoo.com
FB: Big Mama Yacht Club

Fafa Island (SMA)

Nice anchorage well protected from most prevailing directions by a reef. Anchor on the N or SW side of the island, according to the wind.

Faua Harbor (Non SMA)

You can anchor for a short period in front of the wharf after obtaining permission from Port authority. The bottom is mud and holding is good. Dinghy ride to shore. Do not moor to small floating pontoons (private) or to south quay (fishing and local boats only).



'Atata (SMA)

5.4 NM from Faua harbour:
Lagoon side anchorage: enter from E through a pass in the reef near 21°03.42' S / 175°14/77W, then post crew at the bow to follow the channel indicated by buoys. Anchor in 7-8 m over soft sand and grass.
Ocean side anchorages: Several convenient locations, more exposed to wind but sea conditions are usually tolerable.

Outstanding **surf spot** on the west end of Tongatapu reachable by dinghy from Atata.
Surf provider at Ha'atafu Beach
Ph. +676 410 88
steve@surfingtonga.com.



'EUA

Even though there is no protected anchorage at 'Eua, this island is very scenic and a must-do. We highly recommend a day tour and perhaps even a couple of nights in a hotel. Transport to 'Eua is available via a short ferry ride or flight from Tongatapu. The island offers a range of outdoor adventures and cultural experiences and is the hub for eco-tourism in Tonga. It offers unspoiled forests, the scenic 'Eua national parks, and outdoor activities like bird watching, horseback riding, whale watching (July to November), diving, hiking, and bushwalks.

Highlights of 'Eua:

Li'anga Huo a Maui
A cliff hole linked to Polynesian mythology.
Lakufā'anga

A cliff with a tragic family legend tied to seven turtles.

Rock Garden

A scenic spot with a rare pandanus flower.

'Ana 'Ahu (Smoking Cave)

A sinkhole with a misty waterfall.

Lokupō Lookout and Rats Cave

Breathtaking coastal views.

Hafu Pool and Heke Slide

Natural water attractions.

Tokopuha Folokotoa

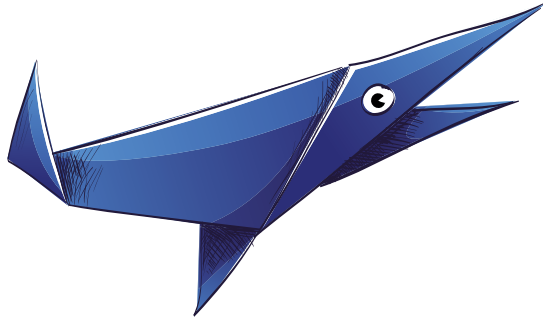
A historic royal burial site.

Soldier Grave

The highest point, marking a WWII soldier's resting place.

Matamāhina Hopo

Ideal for moon and sunrise views over the Tonga trench.



WHERE?
WHEN?
HOW?

TONGATAPU

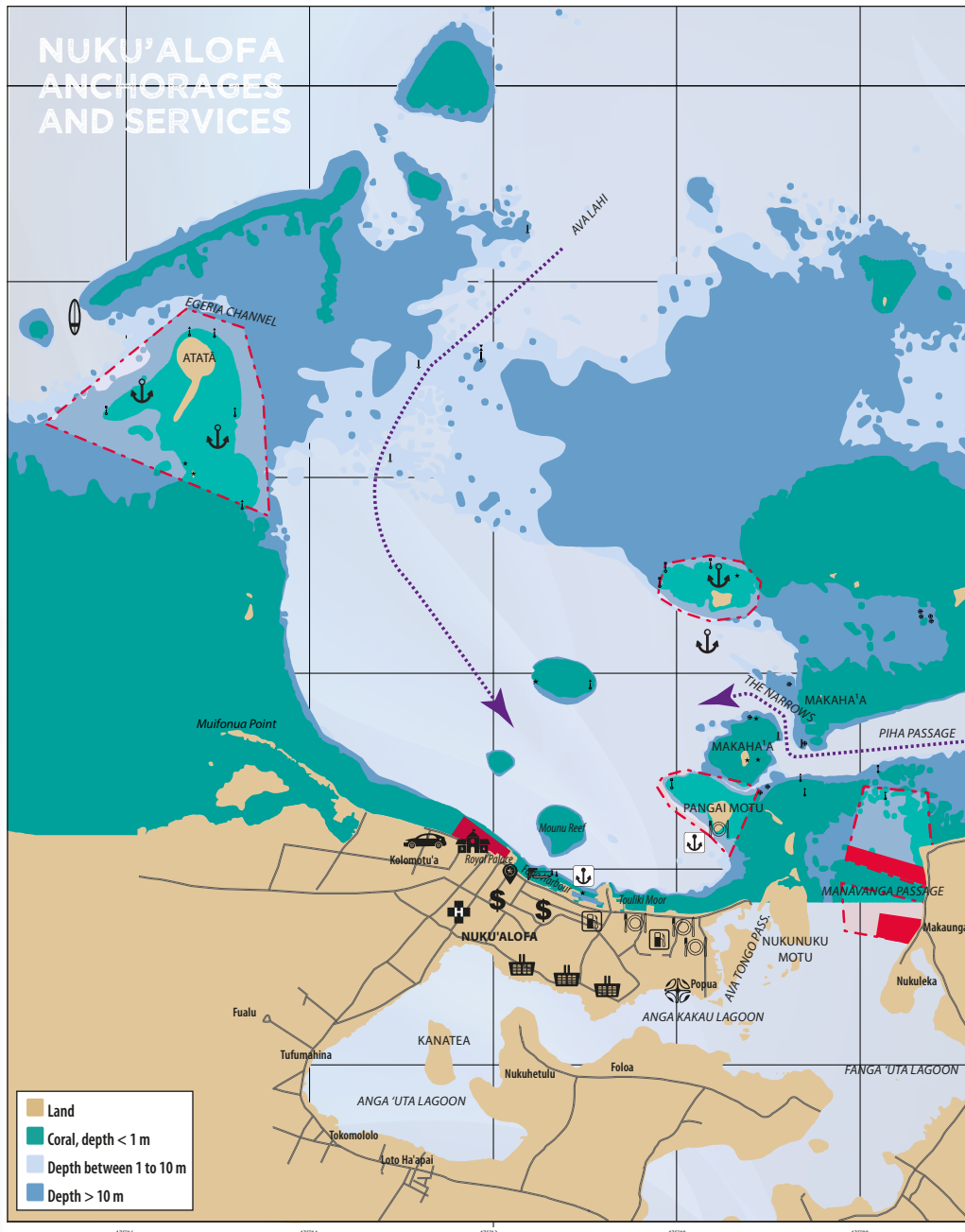
FUEL /GAS STATIONS

For fuel, contact the stations to get a truck to bring drums to the wharf (minimum 200 l order), or jerrycan to their stations.

For cooking gas refills, if you have European bottles, bring your own adaptor.

G0gas Tonga/LPG refilling stations,
Matakieua Road, Tofoa, Nuku'alofa.
Ph. +676 685 9870.

Pacific Fuels – Petrol/diesel:
Nuku'alofa
Ph. +676 22511 / +676 22397



KEY TO SPECIFIC AREAS

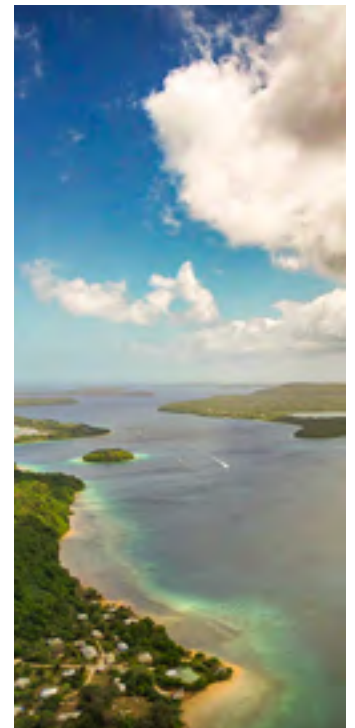
SMA Community Information

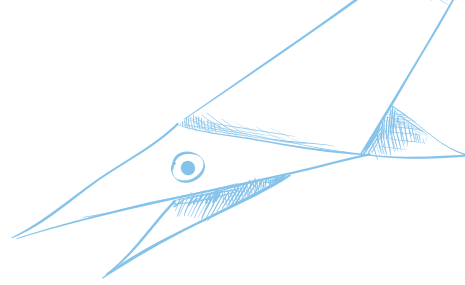
Specific Areas

- SMA boundary
- Fish Habitat Reserve (no fishing, no anchoring)

CHART KEY

- | | |
|---|--|
|  Anchorage |  Bank / ATM |
|  Dinghy |  Car rental |
|  Surf spot |  Shop / grocery |
|  Remarkable site |  Handicrafts |
|  Royal palace |  Fuel station |
|  Hospital |  Restaurant / Bar |





ISLAND GROUP OF TONGATAPU

THE SACRED SOUTH

USEFUL CONTACTS IN TONGATAPU

Tourism Office

Hala Vuna, Nuku'alofa, Tonga
Contact: Ashley Tongia
Ph. +676 25334
ashmeetatongia@gmail.com
FB: Tonga Tourism
■ [tongatourism.travel](https://www.tongatourism.travel)

Hospital (Tongatapu)
Ph. +676 23 200

Friendly Island Dental Clinic
Salote road
Ph. +676 25-455
afataulango@hotmail.com

Sausini Pharmacy & Clinic
Salote Rd - Ph. +676 22-955
suniafifital@gmail.com
FB: Sausini Pharmacy & Clinic

Seini's Pharmacy & Clinic: Pahu Rd,
Nuku'alofa, - Ph. +676 28732

Neeru's Pharmacy: Nuku'alofa
Wellington Road, - Ph. +676 26200

Lolotu Airlines
Tongatapu, Tafua' ahau Rd
Ph. +676 26488 / +676 26688
info@lulutaiairlines.com
lulutai-airlines.to
FB: Lulutai Airline Ltd

THE TONGA NATIONAL MUSEUM IN NUKU'ALOFA

The Tonga National Museum is highly recommended to anyone remotely interested in the history of Tonga. Admire all sorts of ancient Tongan tools, from stone anchors to wooden headrests, and get a fascinating insight into the way that Tongans lived hundreds of years ago. The museum has a very affordable fee and guided tours are provided by passionate and knowledgeable guides at no extra cost. Alternatively, you can walk around the hall self-guided thanks to the detailed information displays. The Tonga National Museum is open from 10 am to 3 pm, Monday to Friday.

Location: Upstairs in Queen Salote Memorial Hall, Tafua'ahau Road (opposite the Lulutai Airlines office), Nuku'alofa city centre, Tongatapu.
Ph. +676 7401701/ +676 7719043
msapomana@gmail.com

EATING OUT

Friends Cafe: 7 am to 10 pm Mon. to Sat.

A popular spot in Nuku'alofa. Discover the building's history while enjoying great European cuisine.
Ph. +676 22390
friends@kalianet.to
FB: Friends Cafe

The TOP Restaurant & Lounge:
Mon. - Sat. / 5:30am - 10:30pm
Amazing views of the city. International dishes, tacos, seafood, burgers...
Ph. +676 685 5482 / +676 878 4505
FB: The TOP Restaurant and Lounge

Billfish Bar and Restaurant:
Daily / 11 am to late. Happy Hrs: 5-7pm
Ph. +676 24084
robert@billfish.com
FB: Billfish Bar & Restaurant
Drink, Dine, Dance.
Offers you the best atmosphere, food & drinks. Sport TV, oversized burgers, local fish curry, juicy steaks, *ota ika*... In the evening: live music, DJs...

Little Italy Restaurant
Mon. - Sat. / 3pm - 9:30pm
Creative pizzas, pastas, steak, lobster and fish.
Ph. +676 25053
info@littleitalytonga.com
■ www.littleitalytonga.com
FB: Little Italy Hotel & Restaurant

Chef Zero
European cuisine with a Polynesian twist
Ph. +676 21178 / +676 771 3380
chef.zero.restaurant@gmail.com
FB: CHEF ZERO Restaurant

12 Seafoods Restaurant
Fish prepared the way Tongans prefer, *ota ika*...
Mon. - Sat. / 10am - 5pm
Ph. +676 28014
fukofishing@gmail.com
■ www.fukofishing.to
FB: 12 Seafoods Restaurant

LAUNDRY

Erima Laundromat on Hala Salote
Street offers dropoff and pickup service:
+676 775 8534

PROVISIONING

A variety of supermarkets in Nuku'alofa has a variety of well provisioned supermarkets. Try Molisi supermarket and Frankie's butchery on Salote Road. The **Talamahu market** is a must do, one of the best in Tonga.

SUPPLIES FOR MARINERS

EM Jones has some basic supplies for mariners.
Ph. +676 29 858, emjoffice@emjonesgroup.com

PTH Timber and Hardware
Ph. +676 23 290

BIKE & CAR RENTAL

There are several providers for bicycle & car rental. The Tonga Tourism office can provide a list.

SHIPPING SERVICES

DHL Ph. +676 27 700
dhltongainfo@gmail.com
Fedex Ph. +676 28 928

tongagsp@tonfon.to
Be sure to put your TIN number on your package!

SHOPPING BY NIGHT IN NUKU'ALOFA

In Nuku'alofa, don't be surprised by the plentiful roadside vegetable stands which stay open until midnight. Also, many small grocery stores are open until late at night.



ACTIVITIES

Scuba or Freedive Among Caves and Corals with Deep Blue Diving Nuku'alofa
Ph. WhatsApp +6767716268 / +6768720720
info@deepbluediving.to

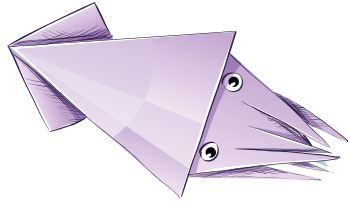
Tonga Golf Club
Taufa'ahau Road, Ha'ateiho
A relaxed 9-hole golf course. It's the only golf club in Tonga.
Ph. +676 29-259
FB: tongagolfclub

Get a Tattoo
Happy Sailor Tattoo Tonga
Salote Road in Nuku'alofa
Ph. +676 775 6777
www.happysailortattoo.com

Discover Tongan Fine Art at Langafonua Gallery & Handicrafts Centre (just next door to Friend's cafe)

Swim with Humpback Whales (see operator list on page 18)

LEARN
RESPECT
EXPERIENCE



RESPECT FOR

TONGAN CULTURE & CUSTOMS

Tonga. The true South Pacific. Few countries in the world have protected their traditions in this way. Tonga has never been controlled by foreign powers and is the last remaining Polynesian monarchy. Tongan society is built around tradition and is gradually entering the modern age, but without ever “selling its soul”, always respecting tradition. Today, many Tongans still live in villages, and traditional village life has not changed greatly from earlier days. Many traditional practices are still an integral part of village life.



The “Faka Tonga” code and values guide the Tongans: mutual respect, sharing and cooperation, humility and generosity, loyalty and commitment. In Tonga, church, family and friends form the society’s core. Weddings and funerals are the most important events. Their respect for family is the reflection of their love for the Tongan Royal Family. One manifestation of this strong tradition can be seen in everyday clothing: The *Ta’ovala* (waistmats) and the *Vala* (sarong). Most Tongan men and women wear the *vala* & *ta’ovala* in everyday clothing and women often add a *kiekie* (waistband) to show respect to “*God, King & country*”. There are different styles of *ta’ovala* & *kiekie*, according to the occasion or ceremony.

SUNDAY CUSTOMS IN TONGA

Sunday in Tonga is a sacred day, and is enshrined as such in the Constitution. Everything is closed on Sunday except restaurants, bars and resorts. No domestic aircraft fly on Sundays, and no sporting activities are permitted. It’s a day for family gatherings at church in the morning, followed by a good meal and an afternoon of rest. Tongans are extremely religious, and a visit to church is not to be missed. You’ll be amazed by the enthusiasm and beauty of the singing, and everyone, men and women, will be in their Sunday best.

TIPS

Out of respect for the inhabitants and their culture, it is recommended that cruisers refrain from swimming or partying on board on Sunday, especially when anchored or moored near a village. On Sunday, you may join the locals in church for a real cultural experience or visit some of Tonga’s stunning outer islands.

RESPECTFUL ATTIRE

Tonga society is very conservative and highly religious. For instance Tongans swim at a public beach fully clothed. Cruisers should dress modestly (shirt or T-shirt for men and ladies covered from shoulders to below the knees). Hats should never be worn in church. It is illegal to go topless even on your boat when anchored near villages. Please do not go to towns or villages in swimwear or other revealing attire.



WWW.TONGATOURISM.TRAVEL THE KINGDOM OF TONGA

 King Tupou VI Years of Reign 2006 - 2012 Reigning King of Tonga	 King Siaosi Tupou V Years of Reign 2006 - 2012	 King Taufa'ohu Tupou IV Years of Reign 1963 - 2006	 Queen Salote Tupou III Years of Reign 1960 - 1965	 King George Tupou II Years of Reign 1953 - 1983	 King George Tupou I Years of Reign 1845 - 1893
---	---	---	--	--	---

POUONO
 In 1839 King George Tupou I committed Tonga to God's protection at Pouono.
"God and Tonga are my inheritance"
 In 1839 King George Tupou I committed Tonga to God's protection at Pouono.

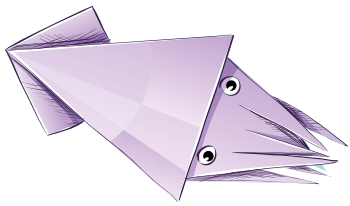
Rev. John Hutchison Rev. John Thomas
 Wesleyan missionaries arrived in Tongatapu on 28th June 1826

"THE FRIENDLY ISLAND"
 Captain James Cook
 First Visited Tonga in 1773, 1774, and 1777.

MALAKULA
 Royal burial grounds. Established in 1893

A first fruits (masi) ceremony at Lapaha in 1777

20th Century — 21st Century
 17th Century — 19th Century



LEARN
RESPECT
EXPERIENCE

MARITIME HISTORY

A LITTLE BIT OF HISTORY

The maritime history of Tonga is quite fascinating. It is recorded that since the ninth century BC, seafarers associated with the Lapita diaspora first settled the islands of Tonga. Tonga was once a vast seafaring empire, known as the Tu'i Tonga Empire, founded around the 10th century.

The Tu'i Tonga Empire was an Oceanic maritime chiefdom centered on the island of Tongatapu, the main island of Tonga. Its influence spanned over a thousand miles, reaching corners of modern-day Fiji, Samoa, and even the Marquesas Islands. This empire was central to exchanging artifacts and

ideas between distant settlements. It was centered on the island of Tongatapu in Tonga, with its capital at Mu'a. The empire arose when Samoa's Tui Manu'a empire declined around the 950s CE. According to oral tradition, 'Aho'eitu, the son of a god and a human woman, was the first leader of the Tu'i Tonga. The empire was able to successfully expand and create a sphere of influence because of the imperial navy and the double canoes fitted for long-distance travel. Further, the Tongan empire demonstrates how Oceania was still home to large imperial powers that flourished for centuries and remained connected despite being home to island cultures.

Since the Tongan language was not written down until the 19th century,

the early history of Tonga (which means "south") is based on oral tradition, as was Tahiti for generations. According to tradition, in the mid-19th century, upon the death of the then Tu'i Tonga, those powers were conferred upon the nineteenth Tu'i Kanokupolu, Tautafa'ahu Tupou, founder of the present dynasty. European chronicles report that the island of Niuatoputapu was discovered by the Dutch navigators Jan Schouten and Jacob le Maire in 1616. In 1643, Abel Tasman discovered Tongatapu, and from then until 1767, when Samuel Wallis anchored at Niuatoputapu, there was no contact with the outside world.

Capt. James Cook visited the Tongatapu and Ha'apai groups in 1773 and again in 1777, and called Lifuka in the Ha'apai group the "friendly island" because of the gentle nature of its

people, hence the archipelago received its nickname, the Friendly Islands. It was in the waters of the Ha'apai group that the famous mutiny on the British ship *Bounty* occurred in 1789. The first Wesleyan missionaries who were then spreading "the Word" throughout the South Pacific landed in Tonga in 1826.

The first half of the 19th century was a period of civil conflict in Tonga, as three lines of kings all sought dominance. They were finally checked during the reign of Tautafa'ahu Tupou, who in 1831 took the name George. By conquest, George Tupou I (r.1845 - 93) gathered all power in his own hands and united the islands; he abolished the feudal system of land tenure and became a constitutional monarch in 1875.

TONGA HISTORICAL SOCIETY

Tonga Voyaging Society is a not-for-profit NGO reviving Tongan maritime cultural heritage traditions through ocean voyaging on modern *kalia*.

The activities:

- build a community of Tonga Ocean Guardians who learn traditional navigation and sailing and who learn to embrace the Tongan

cultural values of the love for the ocean, ocean life, love for the islands and islanders.

- support traditional canoe-builders to continue their craft and traditions.
- raise awareness about the devastating impact of trash and plastic pollution in their

oceans and islands and organize community clean up days.

Get in touch with this NGO to see if you can contribute in any way to the revival of the Tongan maritime heritage.

aunofunaki67@gmail.com

FB: TongaVoyagingSociety

■ www.tongavoyagingsociety.org/



Captain Cook meets Pa'u, the Tu'i Tonga, sacred King of Tonga

PAEPAE 'O TELI'A

Built in the 16th Century

16th Century

Willelm Schouten and Jacob Le Maire

Dutch explorers who visited Tonga in April 1616.

13th Century

TONGA MARITIME EMPIRE AT IT'S PEAK.

13th Century - Tonga controlled parts of the South Pacific for 400 years.

13th Century

THE HA'AMONGA TRILITHION

13th Century Tu'i Tatali (11th TT) built the Ha'amonga 'a Matali Trilithion.

"Stonehenge of the Pacific"

11th Century - 12th Century

1st TU'I TONGA 'AHO'EITU

The Talatama (12th TT) Mu'a became the administration center of the Tongan Maritime Empire.

'Aho'eitu began the expansion of the Tongan Maritime Empire over Samoa.

1-10th Century

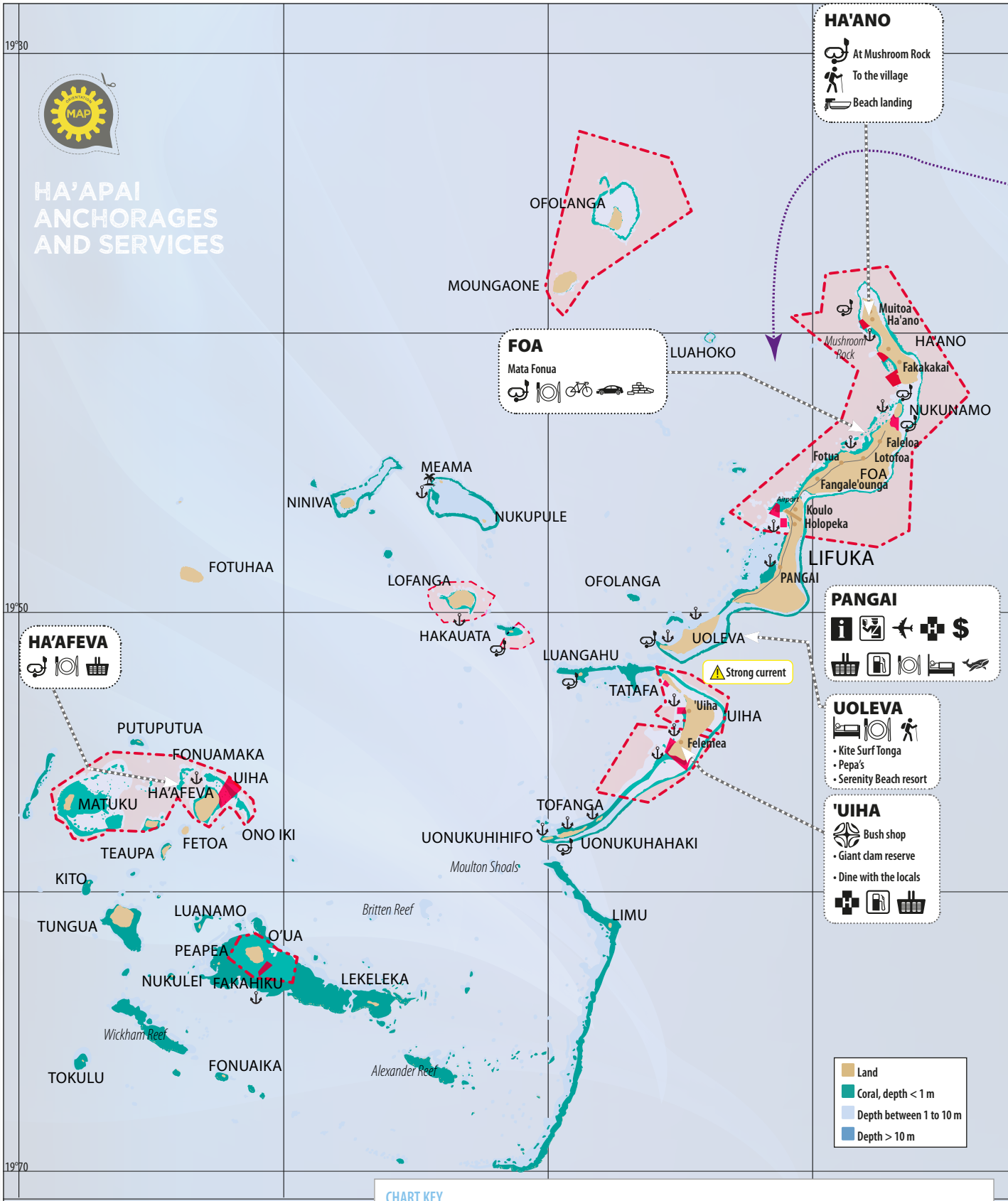
13th Century

16th Century

11th Century

12th Century

1-10th Century



HA'APAI ANCHORAGES AND SERVICES

HA'ANO

- At Mushroom Rock
- To the village
- Beach landing

FOA
Mata Fonua

- Restaurant / Bar
- Car rental
- Hotel
- Whale watching

PANGAI

- Information
- Port of entry
- Airport
- Hospital
- Bank / ATM
- Shop / grocery
- Fuel station
- Hotel
- Whale watching

UOLEVA

- Kite Surf Tonga
- Pepa's
- Serenity Beach resort

'UIHA

- Bush shop
- Giant clam reserve
- Dine with the locals
- Hospital
- Bank / ATM

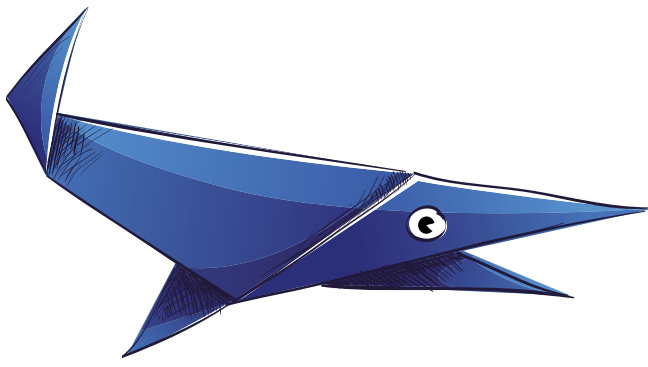
- Land
- Coral, depth < 1 m
- Depth between 1 to 10 m
- Depth > 10 m

CHART KEY

- Anchorage
- Dinghy beach landing
- Dinghy dock
- Surf spot
- Remarkable site
- Royal palace
- Hospital
- Bank / ATM
- Car rental
- Shop / grocery
- Handicrafts / Bush shop
- Fuel station
- Restaurant / Bar
- Airport
- Hospital
- Tourism office, Information
- Port of entry
- Whale watching
- Hotel
- Bike rental
- Snorkeling
- Ruins
- Trail

KEY TO SPECIFIC AREAS

- SMA Community Information**
- Specific Areas
- SMA boundary
 - Fish Habitat Reserve (no fishing, no anchoring)



WHERE?
WHEN?
HOW?

ISLAND GROUP OF HA'APAI

HA'APAI

Ha'apai, the heart of Tonga, consists of 62 islands, 17 of which are inhabited. This area requires careful navigation but offers stunning isolated islands. It is divided into two groups of islands: The western islands (including Nomuka and Ha'afeva) that can be circumnavigated, and the northern islands located on large barrier reefs. The geography is a mixture of low coral islands, active volcanoes, barrier reef, and shallow lagoons. In the 17th century Captain Cook named Lifuka "the Friendly Island". Today, cruisers will still feel the generosity and kindness of the inhabitants. When visiting these islands, you may feel the Tongan spirit of ancient times as people still make their living by farming and fishing. Life is simple, with few modern conveniences. Ha'apai is rich in tradition and the Tongan royal family has its roots here.

CLEARING INTO HA'APAI

If Ha'apai is your entry port in Tonga, you need to:

- Contact the **Health Department** for a health inspection:
Ph. +676 778 1554
Hospital Ha'apai: Ph. +676 60790.
Upon clearance: health fee: TOP\$100 onshore & TOP\$200 offshore
- **Go to the Customs office** to handle **Immigration and Customs** formalities. They will organize an appointment with **Quarantine and Biosecurity**.
- Complete **Biosecurity formalities**: An officer will board your vessel for clearance. Items not declared will be seized.

ANCHORAGES

Anchor at low tide with good light. Of the many anchorages in the Ha'apai, there are none that provide good protection from strong westerly winds. If weather conditions dictate, it is recommended to sail to Vava'u for better protection.

Ha'apai Tourism office

Contact Siope or Moli if you would like to purchase fish, lobster, a pig, or eggs. They can also help with renting a car, provisioning, handicrafts, or booking a whale watching tour.

Inter-island reporting

Before departure, complete a local movement form at the Customs office.

INTER-ISLAND NAVIGATION

All the Ha'apai islands are well charted; however, there are very few aids to navigation. Sail with the sun behind you and a vigilant watch on the bow in order to see color definition and identify coral, shoal areas, and shallows. **During whale watching season (Aug. to Oct.), do not navigate at night inside the Ha'apai Group as you may possibly hit a whale.**

LANDING IN LIFUKA

When anchoring in front of Lifuka harbour, make sure not to anchor in the path of the inter-island ferries or otherwise disrupt their service.

If you need to bring your boat to the main dock, first check the ferry schedule (available on Facebook) or ask the port captain for information and permission.

The beach to the north of the harbour is convenient for dinghy landing or use either side of the wharf. Caution: the steps are slippery!

Port fees must be paid to the Marine department even when anchoring outside the harbour.

YACHT SERVICES

Cruisers should be mostly self sufficient as there are almost no services for yachts in Ha'apai.

Waste: Public garbage bins are on the wharf.

Water: Available on the wharf. If not, contact Siope at the Tourism office for assistance.

Fuel and cooking gas: Available at either of the two stations in Lifuka. Jerrycan only and limited quantity. Pre-order recommended.

Fuel station: Ph. +676 60412

Outboard engines and mechanic: Contact Siope at the Tourism office to get useful contacts.

Small sail repairs: Contact Glen at Kite Surf Tonga.

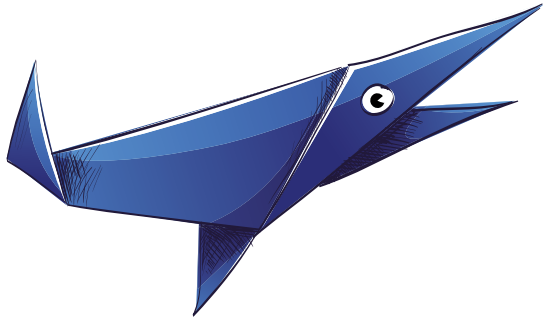
CRUISER HIGHLIGHTS

Between August and October, Humpback whales are everywhere in the Ha'apai islands. They come to the warm, shallow and protected waters to give birth and breed. Contact a whale watching operator to go and swim with them.



USEFUL CONTACTS IN HA'APAI

- Ha'apai Tourism office in Pangai:
Ph. +676 60733 / +676 7741198 / +676 72 06400
itasakopo@gmail.com / moli.pale1966@gmail.com
■ TongaTourism.travel / FB: Ministry of Tourism
- Ha'apai Hospital: Ph. +676 60790 (services: dentist/laboratory/x-ray)
- Customs office: Ph. +676 60651
kalolainateutau@customs.gov.to
- Ministry of Fisheries: Ph. +676 60399
tufa.faingaanuku@tongafish.gov.to / heheakalesita@gmail.com



WHERE?
WHEN?
HOW?
STEP IN

PANGAI VILLAGE ON LIFUKA ISLAND

Lifuka (SMA)

For access to the main village of Pangai and the administrative center of Ha'apai, anchor outside the harbour in 5m sand (big ferries pass close by) approx 19°48'09"S, 174°21'11"W, but watch for small areas of reef on approach.

Available services

ATM and currency exchange,

Digicel shop (for sim cards), fuel & cooking gas, fresh market near the wharf, several grocery stores, two hardware stores. No pharmacy (visit the hospital).

Waste: Public garbage bins on the wharf.

Fanga 'i he Si Market

Pangai, Ha'apai
8 am to 5 pm, Monday to Friday
5 am to 12 pm Saturday

There is a morning net on Channel 16 run by Kite Surf Tonga for weather forecasts and island information such as events at the hotel.

MUST DO IN LIFUKA

- Go to the market on Saturday morning for fresh fruit and vegetables.
- Fish market on the wharf at 6am every Saturday. Great opportunity for mingling with the local population.
- The Mystery Cross.

EAT OUT

- **Lucky Pot** at the market
- **Tigger Inn** on the wharf
- **Lelinoa Ki Moana:** lunch, dinner & bakery

Read more about ancient *Tonga: Triangle Man on a Triangle Voyage and Lapita Village* — both by David Berley

OTHER ANCHORING SUGGESTIONS

Ha'ano (SMA)

Anchor N of Pukotala point – protected from NE to SE but exposed to SE swell. Nice walk between the two villages Haano & Pukotala. Here you'll

find small grocery stores, plantations, snorkeling at the mushroom rock, and trees full of flying foxes.

Foa (SMA)

A couple of anchorages in 4 m over a sandy bottom on the NW side. Good holding & good protection in winds from S to ENE. Located between the villages of Faleloa & Lotofoa.

- Look for the 850-year old petroglyphs at the northern end of the sand beach with stylized people and animals.
- Some of the best snorkeling in the Ha'apai Group is located between the two islands at the northern end of Foa.

Matafonua Lodge:

Dine at the restaurant with 24-hour advance notice. (Closed to cruisers during whale watching season.) Bar is open with happy hour every day all year long. Darren & Nina (owners) are keen to advise cruisers about anchorages and tides as well as activities such as diving, horseback riding, bike & car rental, & whale watching. VHF 14 & 16. info@matafonua.com. Ph.+676 6966

Sandy Beach Resort: Diving & restaurant open to cruisers except during whale watching season..

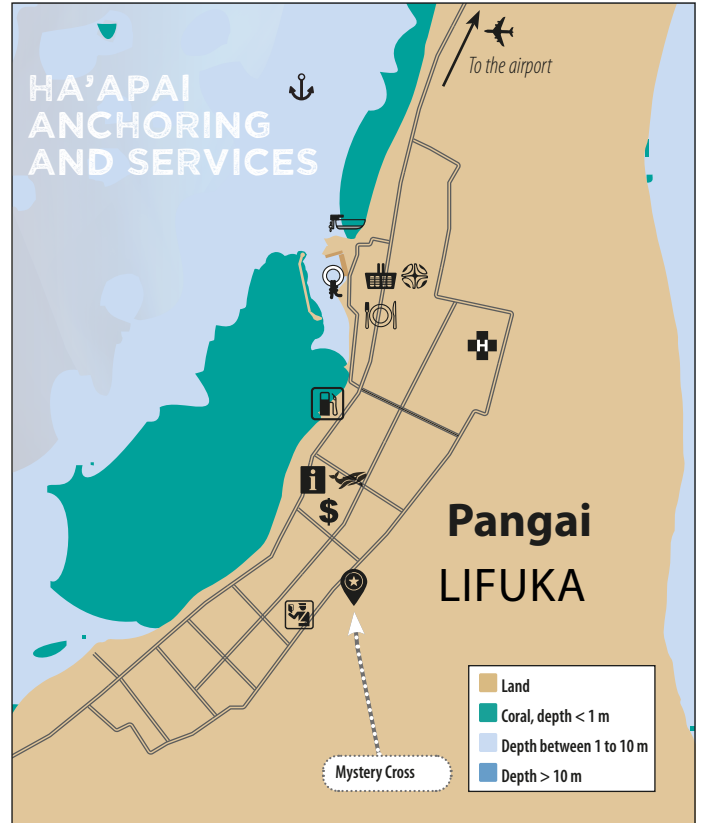


CHART KEY

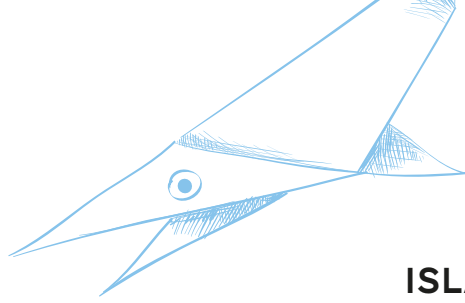
- | | | |
|-----------------------------|------------------|----------------|
| Anchorage | Hospital | Airport |
| Dinghy beach landing | Bank / ATM | Port of entry |
| Dinghy dock | Shop / grocery | Whale watching |
| Tourism office, Information | Handicrafts | Ruins |
| Remarkable site | Fuel station | |
| | Restaurant / Bar | |

UOLEVA North (No SMA)

Northern anchorages are good in SE winds. Sandy bottom with a few coral heads. **Kite Surf Tonga Resort** located behind the beach offers whaleswim, wind sports, site briefings, wing foil and kite surf lessons or dinghy support during your own activities. Equipment shop on site (Ozone dealer). Open bar at 5 pm except Sunday. Dinner with 24-hour pre-booking and barbecue party once a week from May to July. Vegetables and aromatic herbs for sale. Contact Glen. VHF 16 – Ph. +676 845 8188
 ■ www.kitesurftonga.com

UOLEVA South (No SMA)

Great protection in S to NE winds. Beautiful beachcombing and snorkeling. Near these anchorages a couple of places welcome cruisers:
 – **Pepa's Place:** Ph. +676 849 956 / +676 720 1376 – FB: Pepa's
 ■ www.pepas.place
 Services: Whale swim, beach, resort, snorkel, restaurant, accommodation, campsite, kayak... www.pepas.place
 – **Serenity Beach Resort:** Tongan fest every Friday (Umu, pig on a spit, local food & local music), whale watching tour operator and yoga lessons.



ISLAND GROUP OF HA'APAI

ORIGINAL TONGA

OTHER ANCHORING SUGGESTIONS

'Uiha and Felemea (SMA)

- A couple of good anchorages over a sandy bottom in front of the villages of 'Uiha (100 homes) and Felemea (38 homes).
- There are a couple of small "fale keloas" [bush shops] and an infirmary, kindergarten and primary school.
- Buy fish directly from the fishing boats from 6-7am Mon., Weds., & Sat.
- Suggestion: organizing a beach cleanup is a good way to interact with the locals.

Felemea: Caution – there is a pearl farm in front of the village. Suggestion: Meet with the town official to set up a snorkeling expedition, see the giant clam reserve, visit the pearl farm, or book a meal with a local.

Tofonga to Uonukuhifo (No SMA)

Uninhabited (except wild pigs), good protection from SSE to ENE. Beautiful sandy beaches, beachcombing & snorkeling on lagoon and ocean sides.

Ha'afeva (SMA)

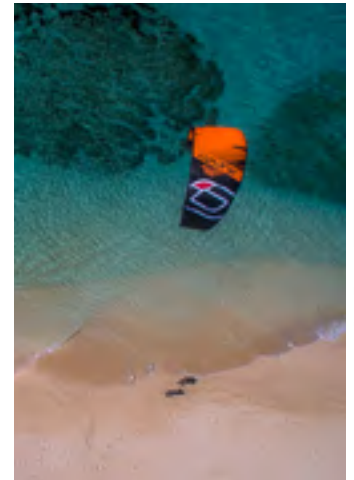
Anchor on the W side facing the wharf ruins. The reef provides good protection from the W. Walk to the pleasant village with small grocery stores.

O'Ua (SMA)

A calm anchorage on the SW side inside the lagoon with access to the village. Great snorkeling in this area.

Nomuka Iki (SMA)

- A large anchorage on the NE side with protection from SW to N winds (can be choppy) in 7-10 meters over a sandy bottom.
- Access the small village of Nomuka via a short dinghy ride across the channel.



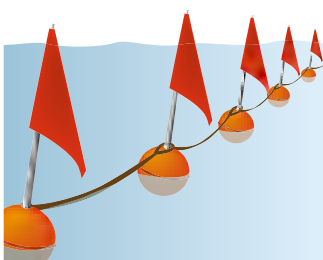
Tatafa (SMA)

From Uoleva to Tatafa, use either the pass E of Tatafa or the pass W of Luanghau Island. Tatafa offers good anchoring over a sandy bottom with protection from N to SE winds. (Do not anchor in the FHR area in front of Tatafa.) 'Uiha is preferable in SE to E winds.

SMA_s - SPECIAL MANAGEMENT AREAS AND FHR_s - FISH HABITAT RESERVES

What is an SMA?

Through the network of SMA_s across Eua, Tongatapu, Ha'apai, and Vava'u, diverse habitats — such as mangroves, seagrass beds and coral reefs — are managed by local communities, fostering inclusive and locally-owned conservation practices.



Some SMA areas are delimited with orange mooring balls.

By focusing on conservation and development concerns, SMA_s enhance marine resources and promote sustainable economic development.

What's a Fish Habitat Reserve?

These areas do not allow anchoring, fishing or harvesting without special permission from the CCMC (Coastal Community Management Committee). However, in an emergency, anchoring is permitted. Some FHR areas are delimited with orange mooring balls and/or small flags.

Learn more at:

■ <https://www.tongafish.gov.to>

Guidelines for Cruisers

Do not fish within an SMA unless registered with or authorized by the SMA community.

Anchor only in sandy areas to protect marine habitats.

Visit the village and meet with the SMA committee to ensure you have anchored appropriately and to learn about possible local activities such as snorkeling with the inhabitants, buying fish or other seafood, or go

fishing with a local to learn about their practices. Snorkeling in FHRs may be allowed for a donation, benefiting both visitors and the community.

Respect FHRs: No anchoring no fishing, and no removal of any species permitted.

SMA committees may inspect vessels (committee members will have identification and high-visibility vests). Communities in Vava'u may charge for anchoring to fund SMA management.



Curryfish



Ark clam



Green snail



Trochus

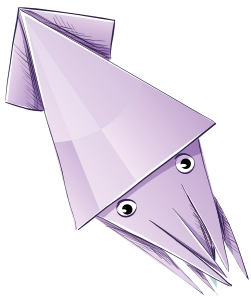


Giant clam



Lobster

Protected species



LEARN
RESPECT
EXPERIENCE

WHALE WATCHING

PRESERVING MARINE LIFE IN TONGA



© This Sheen whale Discoveries

From July to October, Tonga becomes a humpback whale nursery and mating ground for these beautiful marine giants. Whales and their calves are prolific and often found resting at the surface or just below.

No vessel, including tenders, kayaks, stand up paddle boards, etc., are permitted to approach any whale or pod of whales closer than 300m unless you are with a licensed operator.

If you are transiting the area in your vessel or tender, you are expected to divert early enough to stay 300m away from any whale. However, should a whale surface or approach your vessel while underway, you should maintain your course. If at anchor, remain at anchor and stay out of the water.

As per the Whale Watching and Swimming Regulations 2013: No person can be in the water with a whale unless they enter from a certified whale swimming provider's vessel. Violations result in fines (up to \$10,000) and possible imprisonment and are often policed by the operators themselves.

These regulations aim to ensure the safety of both whales and people, while also promoting responsible whale watching and swimming practices.

Swimming with the whales is an opportunity of a lifetime not to be missed whilst cruising the waters of Tonga, so please contact one of the licensed operators below to book a whale watching experience.



Licensed operators can be contacted out on the water on VHF channel 16

TONGATAPU WHALE WATCHING OPERATORS

Tongatapu

Deep Blue Diving
tukia.tatafu@gmail.com

Tahi Tonga
coralconsultingtonga@gmail.com
alainanwilson@outlook.com

Tanoa Hotel
businessservices.tidh@tanoahotels.com

Tonga Ocean Adventures
sepulonik90@gmail.com

Uiha & Sons
uihanson.gio@gmail.com

'Eua
Blue Water Retreat
rtdiving@gmail.com

Kiko's Whale Watching
falemakakoka@gmail.com

HA'APAI WHALE WATCHING OPERATORS

Diana Beach Resort
dianaresort10@gmail.com

Fanifo Lofa (Kite Surf Tonga)
info@kitesurftonga.com

Ha'apai Beach Resort
info@haapaibeachresort.com

Ha'apai Hospitality
beckypepa@gmail.com

Ha'apai Whale and Sail
info@uoleva.com

Liquid Image
darren@matafonua.com

Matafonua
info@matafonua.com

Serenity Beaches
alohafrompatti@yahoo.com

Whale Discoveries
tris@whalediscoveries.com

WHALE WATCHING OPERATORS IN THE VAVA'U GROUP

Beluga Diving
belugadivingvavau@hotmail.com

Blue Lagoon
bluelagoontonga@gmail.com

C'Scape Adventures
mpsvavau9@gmail.com /
hanifsetimal@gmail.com

Cocokara Beach
takako.lui@gmail.com

Dolphin Pacific Diving Ltd
alcoldrick@gmail.com / info@
dolphinpacificdiving.com

Elim Hotel
vavavelimhotel2019@outlook.com

Endangered Encounters
melikiolamanuofettoa066@gmail.com /
info@endangerecounter.com

Flying Annie Moa
huipiekuilboer@gmail.com

Ilena Whale Watching
ilenawhaleswimming@gmail.com

Iven Guttenbeil
hamaniguttenbeil0808@gmail.com

Jones Business Services
caryl.jones@hotmail.com

Lui Charters
lolesio.lui@gmail.com

Mohammed Hanif
mpsvavau9@gmail.com

Moli Manu'ofetoa
manuofetoamoli2014@gmail.com

Port Wine Guest House
portwine_guesthouse@yahoo.com

Puataukanave Int. Hotel
tomifapaea@gmail.com

Shell Garden
kitolife@yahoo.com

SPSA
fetokoisland@yahoo.com

Tongan Beach Resort
info@thetongan.com

Tongan Expeditions
tonganexp@gmail.com

Treasure Island Resort
treasureislandtonga@gmail.com

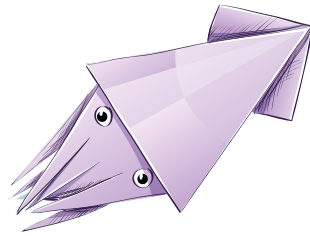
Vaka Moana Co. Ltd
aunofunaki67@gmail.com

Vaka Vave
vakavave@gmail.com

Vava'u Game Fishing
kiwimagic77@gmail.com

Vava'u Whale Adventures
tevitafukofukal@hotmail.com

Whale Watch Vava'u
mounuislandvavau@gmail.com



LEARN
RESPECT
EXPERIENCE

VAVA'U SAILING FESTIVAL

This annual event celebrates sailing in Vava'u and gives cruisers an opportunity to experience the best of the islands and become acquainted with Tongan culture and hospitality.

The Vava'u Sailing Festival, held in late September, is a weeklong series of fun events, sailing races, cultural activities, 'Umu (earth oven) and evening parties held in the beautiful islands of Vava'u.

It is also an informative event where cruisers will meet with several Tongan charity organizations and learn about clearance procedures and yacht services in the Bay of Islands in New Zealand.

More info: FB: Vava'u Sailing Festival



USEFUL PHRASES

ENGLISH

Good-day, hello, or welcome
Welcome
How are you? / Very well
Thank you
Goodbye
Please / Thank you (very much)
You're welcome
Excuse me
Yes / No
Good / Bad
Eat / Drink
Help please
What is the price?
Where is the...?
My name is...
What is your name?
Today / Tomorrow / Yesterday

TONGAN

Malō e lelei (or Malō lelei)
Talitali fiefia
Fefē hake? / Sai 'aupito
Malo
Mou faka'au a e
Fakamolemole
Malō e 'ofa
'lo malo
'lo / Tatali
Lelei or sai / Kovi
Kai / Inu
Kataki
'Oku fiha? or Fiha?
Ko fē'a e ...?
Ko hoku hingoa ko...
Ko hai ho hingoa?
'aho ni / 'apongipongi / 'aneafi



EVENTS CALENDAR

Happy New Year in Tonga!

Due to Tonga's time zone, it is one of the first countries in the world to bring in the new year. While not as big of an event as Christmas, locals will celebrate with New Year's Eve sunset and midnight church services, community feasts and some young locals go out to bars in Nuku'alofa.

Welcome of the whales: In late June, every island group celebrates the arrival of the whales.

Ha'apai Tourism Festival: Held in the 2nd week of June every year, this festival showcases the finest culinary and cultural delights of the Ha'apai.



The International Billfish

Tournament takes place in September in Vava'u, the recognized billfish capital of the South Pacific region.

More info on FB: Vava'u Sport Fishing Club

The Heilala Festival : Tonga's largest festival is a multi-week event starting on July 4th every year and is celebrated in the 3 main groups of islands. Heilala is the name of the Tongan national flower which blooms at this time of the year. The event kicks off with the King's Birthday. Enjoy talent shows, a brass band performance, a singing competition, a parade and the Miss Heilala Beauty Pageant.

Tonga's national day is Tonga Day on 4 November to commemorate the adoption of its constitution on this date in 1875. It celebrates the entire culture and heritage of Tonga.





VAVA'U ANCHORAGES AND SERVICES

MY STAY

20

MAP OF VAVA'U

NEIAFU

Tonga Boat Yard

HUNGA

FOFOA

LAPE

"Coral wonder"

Matamaka

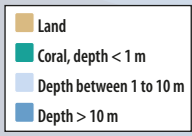
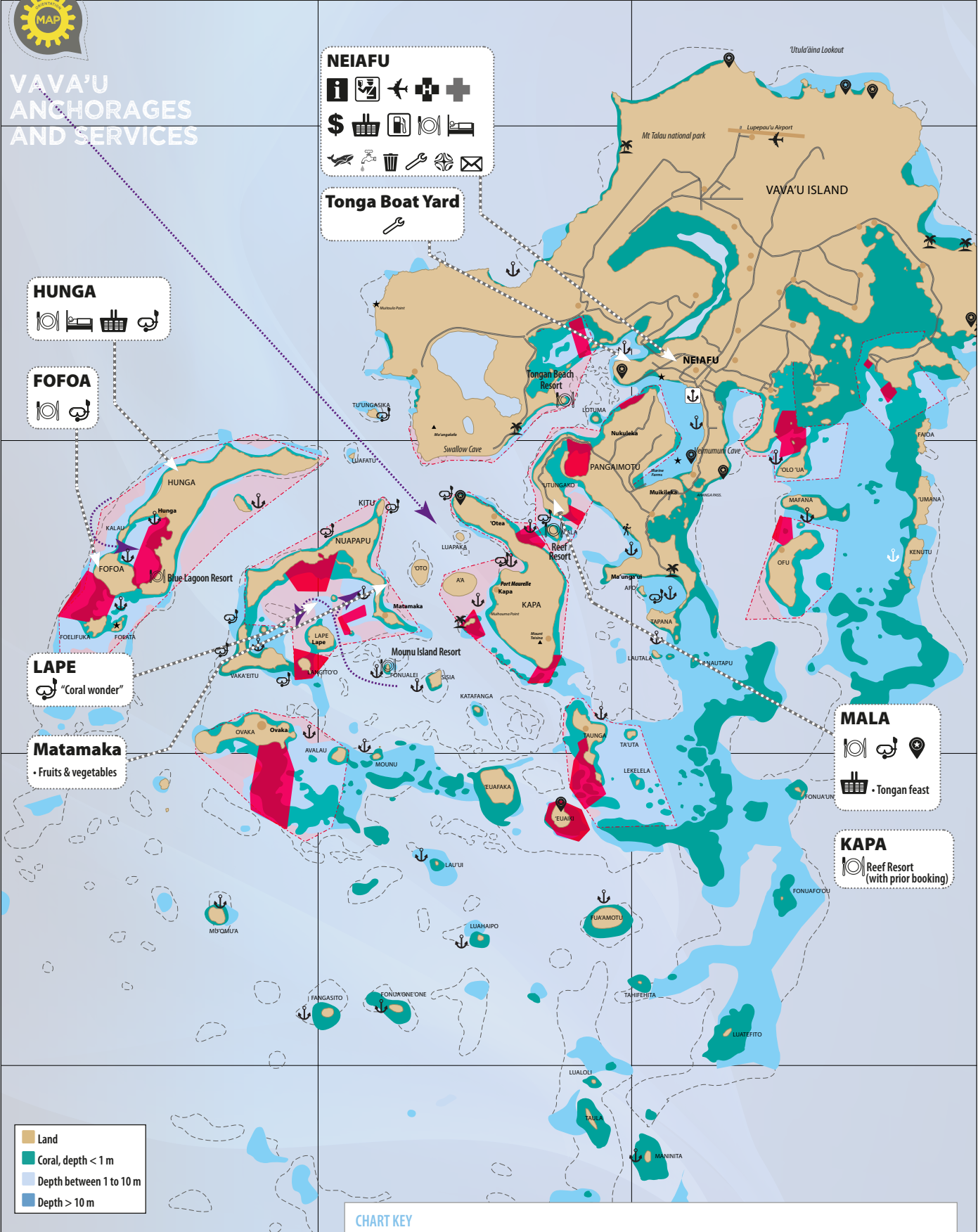
• Fruits & vegetables

MALA

• Tongan feast

KAPA

Reef Resort (with prior booking)



KEY TO SPECIFIC AREAS

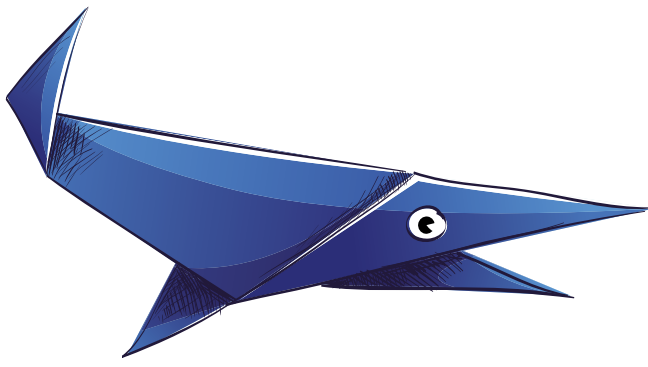
- SMA Community Information**
- Specific Areas
- SMA boundary
 - Fish Habitat Reserve (no fishing, no anchoring)

Do not anchor in the Fish Habitat Reserves

CHART KEY

- | | | |
|-----------------|-----------------------------|----------------|
| Anchorage | Shop / grocery | Whale watching |
| Dinghy dock | Handicrafts / Bush shop | Hotel |
| Surf spot | Fuel station | Bike rental |
| Remarkable site | Restaurant / Bar | Snorkeling |
| Royal palace | Airport | Ruins |
| Hospital | Hospital | Trail |
| Bank / ATM | Tourism office, Information | Beach |
| Car rental | Port of entry | |

STOPOVER HANDBOOK 2025/2026



WHERE?

WHEN?

HOW?

ISLAND GROUP OF VAVA'U

VAVA'U

A protected harbor encircled by islands, Vava'u has one of the most beautiful harbors in the Pacific. Vava'u and its capital Neiafu are the most touristed islands with numerous restaurants and bars for socializing, diving and whale watching tours to discover the marine treasures of Vavau, and plenty of Sunday Tongan feast opportunities to experience the local culture.

APPROACH

Enter NW through the Fainava passage. (Entering the harbor in daylight is recommended.) Mt. Talau (131m) marks the entrance which is deep and straightforward. Be aware of the pearl farm on starboard as you enter.

NAVIGATION

Navigation among the many islands in the group is a straightforward venture, with deep water in the channels and passes except around Kenutu where there are shoals and patches of coral.

WHALE WATCHING OPERATORS

See page 18

ANCHORING SUGGESTIONS

Mala island (SMA area)

Anchor on the NW side in 8-10 m (sand and some coral heads). Avoid in SE wind, and watch out for current when snorkeling the gorgeous Japanese gardens. It's a short walk across the island of Kapa to Port Maurelle or dinghy to the swallow cave.

Dine at the 4-star **Reef Resort Restaurant**. Hobie Cat 14 and paddle board available for rent. Ph. +676 755 9279 / mail@reefresortvavau.com

Short dinghy ride to Lotuma Bay to the **Tongan Beach Resort** (pre-booking requested).

Ph. +676 70 380

■ www.thetongan.com

Ovaka (SMA)

Anchor in front of the village on the E side of Ovaka Island over 8-10m sandy bottom, or between Avalau and Mounu Islands. White sand beach and expansive reef for snorkeling.

Mounu island Resort welcomes cruisers for lunch or dinner. Ph. & Whatsapp +676 840 0553 mounuislandvavau@gmail.com

CLEARING IN NEIAFU

Call the Customs office on VHF 16 (only during working hours) to arrange an appointment with Customs, Immigration, Health and Quarantine. Yachts clear at the fisherman's wharf in Neiafu harbor. The yacht must be brought to the wharf. When arriving on Sunday or after working hours, anchor just in front of the wharf to await opening hours.

Fees: Health declaration TOP\$ 100. Quarantine will collect your garbage with a charge of TOP\$ 20 + \$2 per bag. Customs and Immigration charge overtime on weekends and holidays.

Customs: Ph. +676 70053 seletutelavulavu@gmail.com / uikenouk@gmail.com / pooikaufusi@gmail.com

Marine & Port: Don't forget to pay your port fees. lesielpolitoli@gmail.com.

PORT OF REFUGE

Neiafu harbor: Also known as Port of Refuge due to the excellent protection from wind and waves from all directions. Neiafu is a harbor town that once served as a whaling village & now serves as home base for many sailors. It offers great food, a cozy atmosphere and many services for cruisers.

Listen to the morning net run by VVMRA on VHF 26/60 at 8:30 am.

MOORINGS AND ANCHORAGES

Neiafu: To pick up a mooring, call one of the owners on VHF Ch. 9.

- 20 moorings: Orange buoys (boats <25m) belong to Mango Restaurant [add space] (8779291). Pay at the restaurant (dinghy dock available).
- 30 moorings: Yellow buoys belong to Beluga Diving. 6 long-term moorings available.
- 5 moorings: Outside the harbor, owned by the Boatyard. Contact them for rental.
- 5 moorings available outside of the harbour to rent from the Boatyard

All other moorings are privately owned; do not use. Alternately, anchor south of the mooring field (outside the SMA). For questions, call on VHF Ch. 9.

Outer islands of Vava'u: Anchor in 5 to 15m outside FHR areas. If visibility is poor,

please anchor with caution to avoid coral heads. When anchoring near a village, it is courteous to visit the town official to let them know your plans. They will be able to advise you on the best snorkeling spots, local facilities, & events. Reminder: It is not permitted to fish in SMA areas; ask the local community where fish can be purchased or where it is permitted to fish.

TIDES

In Vava'u there are two high and two low tides in a 24-hour period. Tidal range: 1 to 1.5m. Strong currents may occur in narrow passes (i.e. the entrance to Hunga). Use caution when sailing or snorkeling in these passes.

GIANT CLAM RESERVE

The giant clam and the Triton shell are protected in Tonga. Do not collect these shells. Also, do not anchor or swim in any giant clam reserves.

Around Kapa island

• **Port Maurelle (SMA)** The cove is well protected (except NW wind) and can accommodate up to 15 boats over sand and coral bottom. Please use caution and avoid damaging the coral with your anchor. This anchorage is convenient before departure to Fiji or Ha'apai; it is a straightforward exit via Faihava pass. Easy access for diving or snorkeling at Swallows Cave - a must-do in Vava'u. The village of Falevai Tahi also offers a nice local experience; ask a town official for more information.

• **Nuku Island (SMA)** is known as the King's favorite island. Anchorage on the NW side of the island or off the sand spit nearby, but limited space for boats. Nice snorkeling and diving around.

• **Hunga Island (SMA)** Approach from the west via a narrow pass at mid- to high tide (2m depth at low tide). Anchor on the W outside the FHR. Great snorkeling near the entrance. Meet with the town officer of Hunga if you want to interact with the primary school or buy pigs and fish. Access by dinghy at high tide to **Blue Lagoon Resort** (Foi'ata isl.) and enjoy their Sunday Tongan feast. Ph. +676 843 6300 or 888 8798 / bluelagoonatonga@gmail.com

Lotuma Bay

No anchor near the island (old navy base), or off Tongan beach resort where there are 2 moorings and access to a resort.

Good protection from SE to E winds. Discover the **Tongan Beach Resort**. Ph. +676 874 6400 or +676 872 0022

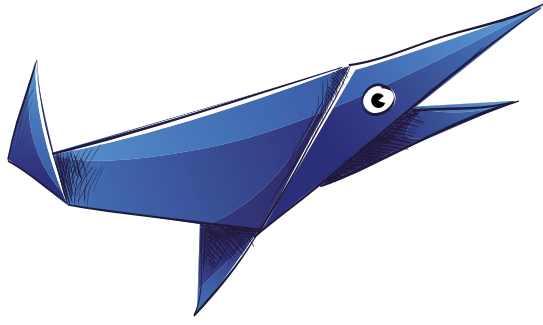
The arc-shaped island of Nuapapu

In front Nuapapu village:

Great snorkeling and a wharf for landing. Welcoming locals (special Saturday afternoon feast). You can attend the Catholic church on Sunday or buy fruit and vegetables from the local inhabitants.

In front of Lape (SMA - no fee): Good holding in 12m and protected from S-SE. Go snorkeling above the coral wonders between Nuapapu and Vaika'eitu.

Vaka'eitu Island (No SMA): Good holding in 12-15 m sandy bottom, excellent wind protection. One of the best anchorages in Vava'u. Numerous trails and awesome vistas. Fishing is allowed around Vaka'eitu.



WHERE?

WHEN?

HOW?

NEIAFU

CRUISERS INFORMATION

- **Morning Net** every day at 8:30 on VHF26 / 60 run by Bear from the Hideaway floating bar together with VVRMA for information about tides, weather forecast, local events, and much more.
- **Fuel:** Several fuel stations in the village (jerry can). When clearing out of Tonga, order minimum 200 L with Pacific Energy (may come to the dock). Ph. +676 779 6988 / +676 775 4428
- **Cooking gas:** refilling service with Tropicana Café and Boatyard Tonga.
- **Water:** Town water is not potable.
- **Waste in Neiafu:** Dustbins for cruisers at the wharf, in front of Vepa and at Beluga dive club. Never leave garbage in the outer islands.
- **Laundry Services** at Tropicana café and Bubble Laundry in Neiafu
- **ATM & currency exchange** in Neiafu
- **Free wifi** in most of the restaurants
- **FedEx** office
- **Holding tanks:** Do not release holding tanks unless you are 5 NM out at sea.
- **Hull cleaning:** It is forbidden to scrape or clean your hull in Vava'u to protect Vava'u biodiversity and prevent introduction of invasive species. Boatyard Tonga can haul out and clean your hull as required for entry into New Zealand.

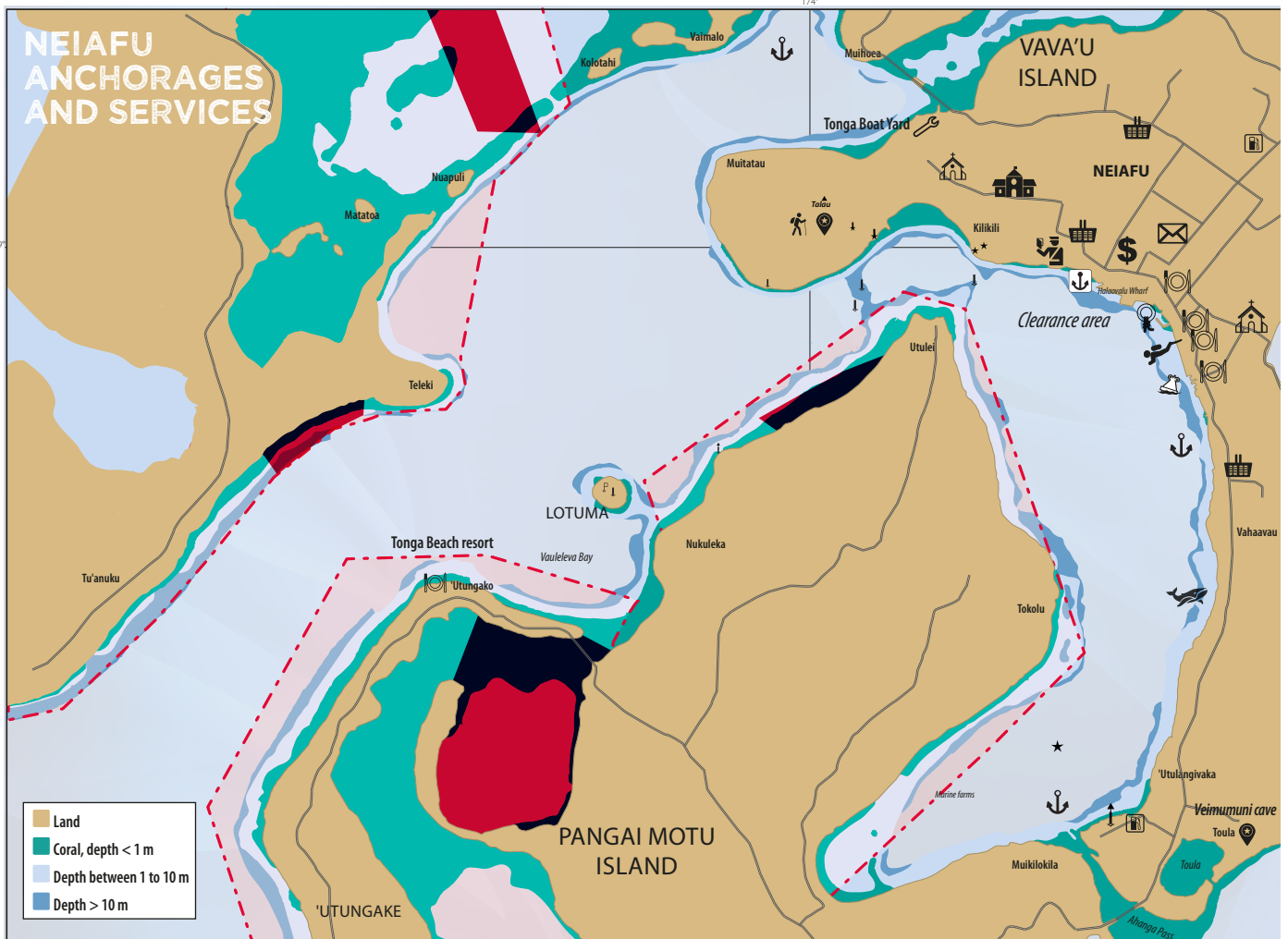


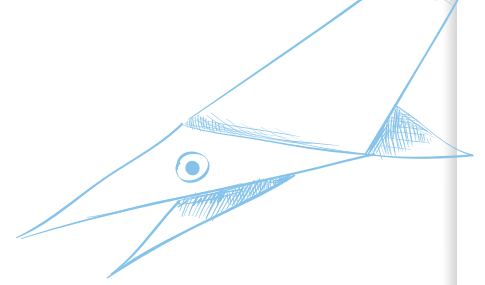
USEFUL CONTACTS

Tourism Office
 Fatafehi Road, Neiafu Vava'u
 Officer in Charge: Lemoto Faka'osi
 Ph. +676 70661 / +676 71005 / +676 8843674
 lfakaosi2020@gmail.com

EMERGENCIES AT SEA
 VVMRA on channel 26 / 60.

Emergency Contacts
 Police & Fire: 922
 Ngu Hospital: Talau, Vava'u
 Ph. +676 70200 (dentist, laboratory and blood donation)
 Couple of pharmacies in Neiafu





ISLAND GROUP OF VAVA'U

PORT OF REFUGE

ACTIVITIES IN NEIAFU

- The Utukalongalu market: Fruits, vegetables & handicrafts
- Fishermen's wharf in the morning for lobster, crab, snapper...
- Catholic church service on Sunday at 10 am
- Hike to Mt Talau' (131 m); 2km west of Neiafu. Learn about 'The Legend of Mt Talau'
- 'Ene'io botanical garden, 22 acres with a variety of flora and fauna (www.eneiobotanicalgarden.com)
- The Veimumuni Cave – bathing place of the maiden goddess Vei – (freshwater spring and swimming hole) located just off the beach east of Toula village
- Join a fishing expedition to try to catch marlin, tuna.
- Do an island guided tour to catch the Vava'u cultural sites

YACHT MAINTENANCE

- **The Boatyard Tonga:** Can haul boats up to 25 tons. Services: electrical, mechanical, woodworking, rigging, Yamaha outboard regional service center, well-supplied chandlery, fishing gear.
- **Fiberglass and other repairs:** Saltydog: saltydogtonga@gmail.com
Vava'u Shipwrights: vavaushipwrights@gmail.com
- **Yacht watching:** Riki Tiki Tonga, Saltydog, Vaiana YS
- **Ship chandlers:** The Boatyard Tonga and Yacht Shop – Online store: www.theyachtshopvavau.com

The Niuaus are the 3 northern and most remote islands of the Kingdom of Tonga. They are located 160NM from Vava'u, and 150NM from Western Samoa.

Niuatoputapu is an official port of entry.

Customs and Immigration formalities are handled by the government official, M. Kaufo'o 'Onesi. His office is in the village of Hihifo. He will direct you to the Health and Quarantine departments. Ph. +676 720 4278 kaufoouonesi74@gmail.com

Approach only during daylight hours.



The channel to the harbour is well marked, but goes through a narrow passage in the reef. Anchor in front of the wharf.

You may then walk a few miles to the main village of Hihifo, or go there by dinghy at high tide.

Niuatoputapu has beautiful beaches and a fertile vegetation, and people live here a simple life, unfettered by technology.

Don't miss having a swim in the freshwater spring (swimming pool) called "*Vai Ko Niutoua*"

These are far less touristed islands than the other island groups of Tonga. Locals will gladly invite cruisers to share lunch on Sunday.

EATING OUT IN VAVA'U

Lot of restaurants and bars in Neiafu. Here is a selection:

- **Sam Restaurant:** Open 7 days/week for lunch & dinner. Sam is a well-respected chef of Chinese cuisine. Located at the small boat wharf. Reasonable prices. Free wifi.
- **Kraken:** Dinghy dock, bar and restaurant.
- **Mango:** Dinghy dock, bar and restaurant.

- **Hideaway:** Floating restaurant and bar.
- **Ta'alo:** Restaurant and bar, pool and table soccer games, fitness center.
- **Tropicana Café:** Open every day for breakfast, lunch and dinner. Fresh yogurt for sale.

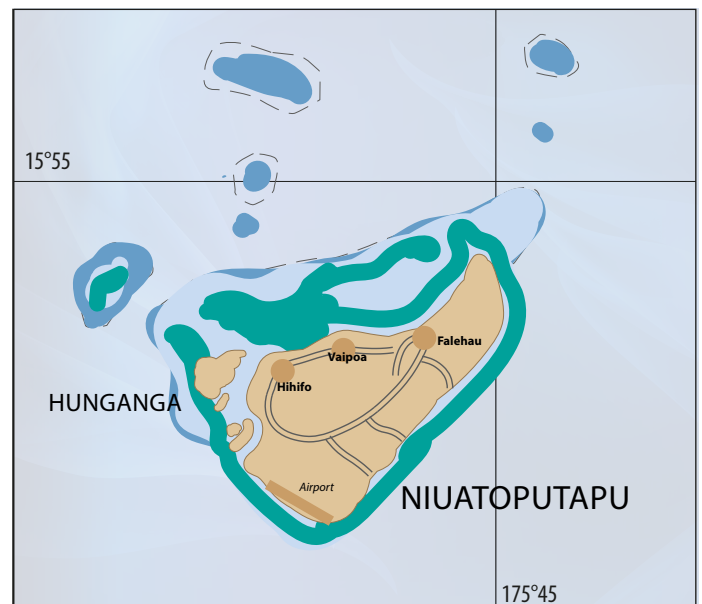
SUPPORT THE LOCAL COMMUNITY

Meet the Vava'u Environmental Protection Association (VEPA) and join their beach cleanup or school awareness programs. VEPA welcomes donations to help the community: books for schools, pens, pencils, and snorkel gear for youth programs.

Location: Neiafu small boat wharf, just under the Bellavista restaurant. Ph. +676 863 9861 / +676 75 19417 info@vavauenvironment.org

ISLAND GROUP OF NIUAUS

NIUATOPUTAPU



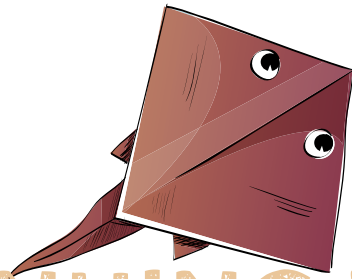
There are no restaurants or ATM; currency exchange only.

The cargo ship only comes twice a month to supply the inhabitants, but one can easily trade useful items such as fishing gear, rope (for tethering horses),

clothing, candy, pencils, games, etc. for fruit, vegetables, fish, or seafood.

There are no SMA areas, nor any whale watching operators in Niuatoputapu.

WHERE?
WHEN?
HOW?



CONTINUING THE VOYAGE

EXIT FORMALITIES

OUTWARD CLEARANCE PROCESS

Port
The first order of business is to pay harbor fees to the Port Authority in Tongatapu, the Harbormaster in Ha'apai or The Marine & Port Vava'u. Upon departure, pay a **Lights and Buoyage** fee of TOP\$2.40 per gross ton.

Immigration and Customs
Go to the Customs office to present your **Local Movement Report** (small craft) if you have been moving between island groups, and also **submit the Outward Clearance Form** (Form No. CI5):
www.revenue.gov.to

Customs will also handle Immigration departure formalities (exit stamp on each passport). However, you will need to visit Immigration with immigration-related issues (visa extensions, for example). There are no fees for outward clearance except for after hours (TOP\$100) or weekends and holidays (TOP\$120). Check to ensure all crew members have **valid visas for the next destination** and are cleared to leave.

Clearance Timing: Note that clearance cannot be done on Sundays, so plan your departure accordingly.

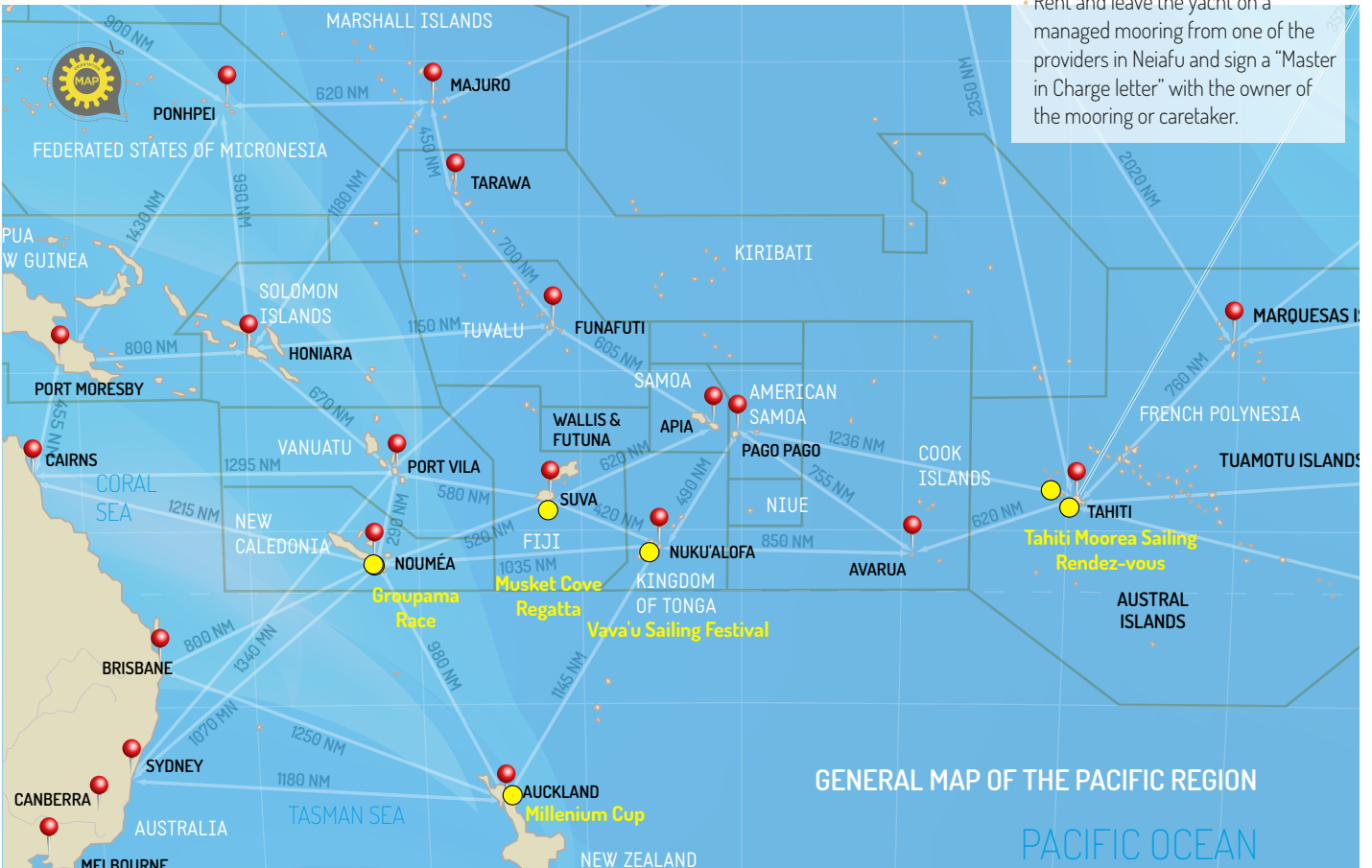
DUTY-FREE
To purchase duty-free fuel (minimum 250 L order) and items at the duty-free shop, report to Customs on the day before departure for a duty-free fuel & shopping form. Duty free shops in Nuku'alofa and Vava'u only.

ADDITIONAL TIPS
Note that recycling facilities are rare in Tonga. To assist the population, if your next stopover is Fiji or New Zealand, consider collecting used batteries from the local communities and carrying them to Fiji / New Zealand for proper treatment.

WINTERING IN TONGA
Leaving your boat in Tonga
Your vessel has a permit from Customs to stay for an initial 4 months, which can be renewed 2 times. The maximum stay is 12 months. **DO NOT** let this permit lapse or you will have to pay import fees.

If you plan to leave your boat in Tonga for cyclone season, Vava'u / Port of Refuge offers the best protection. However, it is a requirement to have someone look after your boat while you are away; they will be responsible for the vessel. Before flying out, obtain a "Master in Charge Letter" stamped by both Customs and Immigration. A yacht agent can handle this for you.

- Two options:**
- Haul the boat at The Boatyard Tonga in Vava'u. If your boat is at their facility, they are responsible for the extension of your Customs permit.
 - Rent and leave the yacht on a managed mooring from one of the providers in Neiafu and sign a "Master in Charge letter" with the owner of the mooring or caretaker.



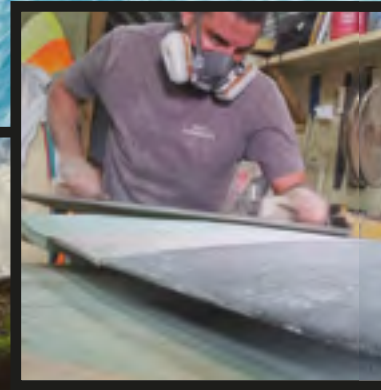
GENERAL MAP OF THE PACIFIC REGION

PACIFIC OCEAN

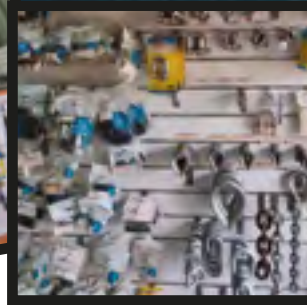


Tonga's only yacht haul-out and service facility. Built by cruisers for cruisers. Our onsite facilities include toilets and showers, Marine store, Shipwrights and mechanics. Live aboards welcome. New Zealand pre-arrival hull clean and anti-foul services.

Store your boat for cyclone season at a secure and sheltered boatyard in a low cyclone area. Or just stop in for a short stay and use our onsite repair services & marine store.



- .Fibreglass repairs and fabrication
- .Woodwork
- .Marine Electrical repairs and installations
- .Mechanical repairs, engine rebuilds and new engine installations.
- .Yamaha Service centre.



Marine Chandlery and Supplies. From spearguns to anchors, running rigging to battery banks, we've got you covered!



EXPERIENCE THE TROPICAL BLISS IN TONGA



Dreaming of the perfect summer getaway? Look no further than the pristine beaches and crystal-clear waters of Tonga! With its warm, welcoming locals and endless opportunities for adventure, Tonga is your ultimate summer destination

VISIT US FOR MORE



www.tongatourismtravel

For more information please contact us at
PH: +676 25-334 | E: tongatourismmarketing@gmail.com
A: Tonga Tourism Authority, Vuna Rd, P.O. Box 37
Opening Hours: Mon - Fri 8:30am - 4:30pm | Sat 9am - 1pm
Close on public Holidays